

Príloha A - elementárne charakteristiky dokončených bytov spolu							
Obdobie		Dokončené byty spolu	Absolútny prírastok	Koeficient rastu	Koeficient prírastku	Tempo rastu	Tempo prírastku
		y_t	Δ_t	k_t	$k_{\Delta t}$	T_t	$T_{\Delta t}$
2008	1.Q.	3,219	-	-	-	-	-
	2.Q.	3,907	688	1.2137	0.2137	121.37%	21.37%
	3.Q.	4,259	352	1.0901	0.0901	109.01%	9.01%
	4.Q.	5,799	1,540	1.3616	0.3616	136.16%	36.16%
2009	1.Q.	3,443	-2,356	0.5937	-0.4063	59.37%	-40.63%
	2.Q.	3,787	344	1.0999	0.0999	109.99%	9.99%
	3.Q.	4,550	763	1.2015	0.2015	120.15%	20.15%
	4.Q.	7,054	2,504	1.5503	0.5503	155.03%	55.03%
2010	1.Q.	3,098	-3,956	0.4392	-0.5608	43.92%	-56.08%
	2.Q.	3,745	647	1.2088	0.2088	120.88%	20.88%
	3.Q.	4,634	889	1.2374	0.2374	123.74%	23.74%
	4.Q.	5,599	965	1.2082	0.2082	120.82%	20.82%
2011	1.Q.	3,473	-2,126	0.6203	-0.3797	62.03%	-37.97%
	2.Q.	2,723	-750	0.7840	-0.2160	78.40%	-21.60%
	3.Q.	3,184	461	1.1693	0.1693	116.93%	16.93%
	4.Q.	5,228	2,044	1.6420	0.6420	164.20%	64.20%
2012	1.Q.	2,856	-2,372	0.5463	-0.4537	54.63%	-45.37%
	2.Q.	3,323	467	1.1635	0.1635	116.35%	16.35%
	3.Q.	3,487	164	1.0494	0.0494	104.94%	4.94%
	4.Q.	5,589	2,102	1.6028	0.6028	160.28%	60.28%
2013	1.Q.	3,287	-2,302	0.5881	-0.4119	58.81%	-41.19%
	2.Q.	2,981	-306	0.9069	-0.0931	90.69%	-9.31%
	3.Q.	3,427	446	1.1496	0.1496	114.96%	14.96%
	4.Q.	5,405	1,978	1.5772	0.5772	157.72%	57.72%
2014	1.Q.	3,192	-2,213	0.5906	-0.4094	59.06%	-40.94%
	2.Q.	3,278	86	1.0269	0.0269	102.69%	2.69%
	3.Q.	3,221	-57	0.9826	-0.0174	98.26%	-1.74%
	4.Q.	5,294	2,073	1.6436	0.6436	164.36%	64.36%
2015	1.Q.	3,823	-1,471	0.7221	-0.2779	72.21%	-27.79%
	2.Q.	2,839	-984	0.7426	-0.2574	74.26%	-25.74%
	3.Q.	3,254	415	1.1462	0.1462	114.62%	14.62%
	4.Q.	5,555	2,301	1.7071	0.7071	170.71%	70.71%
2016	1.Q.	3,099	-2,456	0.5579	-0.4421	55.79%	-44.21%
	2.Q.	3,158	59	1.0190	0.0190	101.90%	1.90%
	3.Q.	3,674	516	1.1634	0.1634	116.34%	16.34%
	4.Q.	5,741	2,067	1.5626	0.5626	156.26%	56.26%
2017	1.Q.	3,947	-1,794	0.6875	-0.3125	68.75%	-31.25%
	2.Q.	3,155	-792	0.7993	-0.2007	79.93%	-20.07%
	3.Q.	4,182	1,027	1.3255	0.3255	132.55%	32.55%
	4.Q.	5,662	1,480	1.3539	0.3539	135.39%	35.39%
2018	1.Q.	4,348	-1,314	0.7679	-0.2321	76.79%	-23.21%
	2.Q.	3,956	-392	0.9098	-0.0902	90.98%	-9.02%
	3.Q.	4,354	398	1.1006	0.1006	110.06%	10.06%
	4.Q.	6,413	2,059	1.4729	0.4729	147.29%	47.29%
2019	1.Q.	4,356	-2,057	0.6792	-0.3208	67.92%	-32.08%
	2.Q.	4,436	80	1.0184	0.0184	101.84%	1.84%
	3.Q.	4,578	142	1.0320	0.0320	103.20%	3.20%
	4.Q.	6,801	2,223	1.4856	0.4856	148.56%	48.56%
2020	1.Q.	4,587	-2,214	0.6745	-0.3255	67.45%	-32.55%
	2.Q.	4,164	-423	0.9078	-0.0922	90.78%	-9.22%
	3.Q.	5,929	1,765	1.4239	0.4239	142.39%	42.39%
	4.Q.	6,810	881	1.1486	0.1486	114.86%	14.86%
Spolu		221,863	3,591	x	x	x	x

Príloha B - elementárne charakteristiky dokončených bytov v rodinných domoch							
Obdobie		Dokončené byty v rodinných domoch	Absolútny prírastok	Koeficient rastu	Koeficient prírastku	Tempo rastu	Tempo prírastku
		y_t	Δ_t	k_t	$k_{\Delta t}$	T_t	$T_{\Delta t}$
2008	1.Q.	1,783	-	-	-	-	-
	2.Q.	1,827	44	1.0247	0.0247	102.47%	2.47%
	3.Q.	1,833	6	1.0033	0.0033	100.33%	0.33%
	4.Q.	3,059	1,226	1.6688	0.6688	166.88%	66.88%
2009	1.Q.	1,906	-1,153	0.6231	-0.3769	62.31%	-37.69%
	2.Q.	1,936	30	1.0157	0.0157	101.57%	1.57%
	3.Q.	1,915	-21	0.9892	-0.0108	98.92%	-1.08%
	4.Q.	3,265	1,350	1.7050	0.7050	170.50%	70.50%
2010	1.Q.	1,848	-1,417	0.5660	-0.4340	56.60%	-43.40%
	2.Q.	1,868	20	1.0108	0.0108	101.08%	1.08%
	3.Q.	2,158	290	1.1552	0.1552	115.52%	15.52%
	4.Q.	3,262	1,104	1.5116	0.5116	151.16%	51.16%
2011	1.Q.	1,829	-1,433	0.5607	-0.4393	56.07%	-43.93%
	2.Q.	1,981	152	1.0831	0.0831	108.31%	8.31%
	3.Q.	1,946	-35	0.9823	-0.0177	98.23%	-1.77%
	4.Q.	3,007	1,061	1.5452	0.5452	154.52%	54.52%
2012	1.Q.	1,801	-1,206	0.5989	-0.4011	59.89%	-40.11%
	2.Q.	1,972	171	1.0949	0.0949	109.49%	9.49%
	3.Q.	2,123	151	1.0766	0.0766	107.66%	7.66%
	4.Q.	3,583	1,460	1.6877	0.6877	168.77%	68.77%
2013	1.Q.	2,011	-1,572	0.5613	-0.4387	56.13%	-43.87%
	2.Q.	2,008	-3	0.9985	-0.0015	99.85%	-0.15%
	3.Q.	2,407	399	1.1987	0.1987	119.87%	19.87%
	4.Q.	3,782	1,375	1.5713	0.5713	157.13%	57.13%
2014	1.Q.	2,166	-1,616	0.5727	-0.4273	57.27%	-42.73%
	2.Q.	2,113	-53	0.9755	-0.0245	97.55%	-2.45%
	3.Q.	2,254	141	1.0667	0.0667	106.67%	6.67%
	4.Q.	3,508	1,254	1.5563	0.5563	155.63%	55.63%
2015	1.Q.	1,930	-1,578	0.5502	-0.4498	55.02%	-44.98%
	2.Q.	2,235	305	1.1580	0.1580	115.80%	15.80%
	3.Q.	2,240	5	1.0022	0.0022	100.22%	0.22%
	4.Q.	3,455	1,215	1.5424	0.5424	154.24%	54.24%
2016	1.Q.	2,197	-1,258	0.6359	-0.3641	63.59%	-36.41%
	2.Q.	2,494	297	1.1352	0.1352	113.52%	13.52%
	3.Q.	2,642	148	1.0593	0.0593	105.93%	5.93%
	4.Q.	3,862	1,220	1.4618	0.4618	146.18%	46.18%
2017	1.Q.	2,528	-1,334	0.6546	-0.3454	65.46%	-34.54%
	2.Q.	2,470	-58	0.9771	-0.0229	97.71%	-2.29%
	3.Q.	2,742	272	1.1101	0.1101	111.01%	11.01%
	4.Q.	3,807	1,065	1.3884	0.3884	138.84%	38.84%
2018	1.Q.	2,642	-1,165	0.6940	-0.3060	69.40%	-30.60%
	2.Q.	2,865	223	1.0844	0.0844	108.44%	8.44%
	3.Q.	2,875	10	1.0035	0.0035	100.35%	0.35%
	4.Q.	4,305	1,430	1.4974	0.4974	149.74%	49.74%
2019	1.Q.	2,781	-1,524	0.6460	-0.3540	64.60%	-35.40%
	2.Q.	2,940	159	1.0572	0.0572	105.72%	5.72%
	3.Q.	3,091	151	1.0514	0.0514	105.14%	5.14%
	4.Q.	4,526	1,435	1.4643	0.4643	146.43%	46.43%
2020	1.Q.	2,851	-1,675	0.6299	-0.3701	62.99%	-37.01%
	2.Q.	2,713	-138	0.9516	-0.0484	95.16%	-4.84%
	3.Q.	3,515	802	1.2956	0.2956	129.56%	29.56%
	4.Q.	4,342	827	1.2353	0.2353	123.53%	23.53%
Spolu		137,199	2,559	x	x	x	x

Príloha C - elementárne charakteristiky dokončených jednoizbových bytov a garsónok							
Obdobie		Dokončené byty jednoizbové a garsónky	Absolútny prírastok	Koeficient rastu	Koeficient prírastku	Tempo rastu	Tempo prírastku
		y_t	Δ_t	k_t	$k_{\Delta t}$	T_t	$T_{\Delta t}$
2008	1.Q.	402	-	-	-	-	-
	2.Q.	479	77	1.1915	0.1915	119.15%	19.15%
	3.Q.	558	79	1.1649	0.1649	116.49%	16.49%
	4.Q.	500	-58	0.8961	-0.1039	89.61%	-10.39%
2009	1.Q.	230	-270	0.4600	-0.5400	46.00%	-54.00%
	2.Q.	532	302	2.3130	1.3130	231.30%	131.30%
	3.Q.	391	-141	0.7350	-0.2650	73.50%	-26.50%
	4.Q.	707	316	1.8082	0.8082	180.82%	80.82%
2010	1.Q.	169	-538	0.2390	-0.7610	23.90%	-76.10%
	2.Q.	327	158	1.9349	0.9349	193.49%	93.49%
	3.Q.	456	129	1.3945	0.3945	139.45%	39.45%
	4.Q.	482	26	1.0570	0.0570	105.70%	5.70%
2011	1.Q.	350	-132	0.7261	-0.2739	72.61%	-27.39%
	2.Q.	148	-202	0.4229	-0.5771	42.29%	-57.71%
	3.Q.	182	34	1.2297	0.2297	122.97%	22.97%
	4.Q.	417	235	2.2912	1.2912	229.12%	129.12%
2012	1.Q.	222	-195	0.5324	-0.4676	53.24%	-46.76%
	2.Q.	268	46	1.2072	0.2072	120.72%	20.72%
	3.Q.	270	2	1.0075	0.0075	100.75%	0.75%
	4.Q.	360	90	1.3333	0.3333	133.33%	33.33%
2013	1.Q.	277	-83	0.7694	-0.2306	76.94%	-23.06%
	2.Q.	180	-97	0.6498	-0.3502	64.98%	-35.02%
	3.Q.	289	109	1.6056	0.6056	160.56%	60.56%
	4.Q.	356	67	1.2318	0.2318	123.18%	23.18%
2014	1.Q.	172	-184	0.4831	-0.5169	48.31%	-51.69%
	2.Q.	187	15	1.0872	0.0872	108.72%	8.72%
	3.Q.	269	82	1.4385	0.4385	143.85%	43.85%
	4.Q.	374	105	1.3903	0.3903	139.03%	39.03%
2015	1.Q.	457	83	1.2219	0.2219	122.19%	22.19%
	2.Q.	131	-326	0.2867	-0.7133	28.67%	-71.33%
	3.Q.	158	27	1.2061	0.2061	120.61%	20.61%
	4.Q.	355	197	2.2468	1.2468	224.68%	124.68%
2016	1.Q.	186	-169	0.5239	-0.4761	52.39%	-47.61%
	2.Q.	119	-67	0.6398	-0.3602	63.98%	-36.02%
	3.Q.	142	23	1.1933	0.1933	119.33%	19.33%
	4.Q.	408	266	2.8732	1.8732	287.32%	187.32%
2017	1.Q.	296	-112	0.7255	-0.2745	72.55%	-27.45%
	2.Q.	137	-159	0.4628	-0.5372	46.28%	-53.72%
	3.Q.	434	297	3.1679	2.1679	316.79%	216.79%
	4.Q.	422	-12	0.9724	-0.0276	97.24%	-2.76%
2018	1.Q.	247	-175	0.5853	-0.4147	58.53%	-41.47%
	2.Q.	175	-72	0.7085	-0.2915	70.85%	-29.15%
	3.Q.	368	193	2.1029	1.1029	210.29%	110.29%
	4.Q.	301	-67	0.8179	-0.1821	81.79%	-18.21%
2019	1.Q.	303	2	1.0066	0.0066	100.66%	0.66%
	2.Q.	340	37	1.1221	0.1221	112.21%	12.21%
	3.Q.	227	-113	0.6676	-0.3324	66.76%	-33.24%
	4.Q.	354	127	1.5595	0.5595	155.95%	55.95%
2020	1.Q.	406	52	1.1469	0.1469	114.69%	14.69%
	2.Q.	280	-126	0.6897	-0.3103	68.97%	-31.03%
	3.Q.	574	294	2.0500	1.0500	205.00%	105.00%
	4.Q.	260	-314	0.4530	-0.5470	45.30%	-54.70%
Spolu		16,634	-142	x	x	x	x

Príloha D - elementárne charakteristiky dokončených dvojizbových bytov							
Obdobie		Dokončené byty dvojizbové	Absolútny prírastok	Koeficient rastu	Koeficient prírastku	Tempo rastu	Tempo prírastku
		y_t	Δ_t	k_t	$k_{\Delta t}$	T_t	$T_{\Delta t}$
2008	1.Q.	720	-	-	-	-	-
	2.Q.	922	202	1.2806	0.2806	128.06%	28.06%
	3.Q.	1,109	187	1.2028	0.2028	120.28%	20.28%
	4.Q.	1,305	196	1.1767	0.1767	117.67%	17.67%
2009	1.Q.	656	-649	0.5027	-0.4973	50.27%	-49.73%
	2.Q.	733	77	1.1174	0.1174	111.74%	11.74%
	3.Q.	1,174	441	1.6016	0.6016	160.16%	60.16%
	4.Q.	1,614	440	1.3748	0.3748	137.48%	37.48%
2010	1.Q.	589	-1,025	0.3649	-0.6351	36.49%	-63.51%
	2.Q.	795	206	1.3497	0.3497	134.97%	34.97%
	3.Q.	1,208	413	1.5195	0.5195	151.95%	51.95%
	4.Q.	1,242	34	1.0281	0.0281	102.81%	2.81%
2011	1.Q.	767	-475	0.6176	-0.3824	61.76%	-38.24%
	2.Q.	342	-425	0.4459	-0.5541	44.59%	-55.41%
	3.Q.	660	318	1.9298	0.9298	192.98%	92.98%
	4.Q.	1,046	386	1.5848	0.5848	158.48%	58.48%
2012	1.Q.	554	-492	0.5296	-0.4704	52.96%	-47.04%
	2.Q.	524	-30	0.9458	-0.0542	94.58%	-5.42%
	3.Q.	532	8	1.0153	0.0153	101.53%	1.53%
	4.Q.	1,080	548	2.0301	1.0301	203.01%	103.01%
2013	1.Q.	631	-449	0.5843	-0.4157	58.43%	-41.57%
	2.Q.	515	-116	0.8162	-0.1838	81.62%	-18.38%
	3.Q.	517	2	1.0039	0.0039	100.39%	0.39%
	4.Q.	816	299	1.5783	0.5783	157.83%	57.83%
2014	1.Q.	537	-279	0.6581	-0.3419	65.81%	-34.19%
	2.Q.	625	88	1.1639	0.1639	116.39%	16.39%
	3.Q.	457	-168	0.7312	-0.2688	73.12%	-26.88%
	4.Q.	952	495	2.0832	1.0832	208.32%	108.32%
2015	1.Q.	802	-150	0.8424	-0.1576	84.24%	-15.76%
	2.Q.	400	-402	0.4988	-0.5012	49.88%	-50.12%
	3.Q.	585	185	1.4625	0.4625	146.25%	46.25%
	4.Q.	902	317	1.5419	0.5419	154.19%	54.19%
2016	1.Q.	469	-433	0.5200	-0.4800	52.00%	-48.00%
	2.Q.	341	-128	0.7271	-0.2729	72.71%	-27.29%
	3.Q.	547	206	1.6041	0.6041	160.41%	60.41%
	4.Q.	942	395	1.7221	0.7221	172.21%	72.21%
2017	1.Q.	709	-233	0.7527	-0.2473	75.27%	-24.73%
	2.Q.	462	-247	0.6516	-0.3484	65.16%	-34.84%
	3.Q.	624	162	1.3506	0.3506	135.06%	35.06%
	4.Q.	865	241	1.3862	0.3862	138.62%	38.62%
2018	1.Q.	880	15	1.0173	0.0173	101.73%	1.73%
	2.Q.	583	-297	0.6625	-0.3375	66.25%	-33.75%
	3.Q.	645	62	1.1063	0.1063	110.63%	10.63%
	4.Q.	1,056	411	1.6372	0.6372	163.72%	63.72%
2019	1.Q.	756	-300	0.7159	-0.2841	71.59%	-28.41%
	2.Q.	693	-63	0.9167	-0.0833	91.67%	-8.33%
	3.Q.	768	75	1.1082	0.1082	110.82%	10.82%
	4.Q.	1,282	514	1.6693	0.6693	166.93%	66.93%
2020	1.Q.	833	-449	0.6498	-0.3502	64.98%	-35.02%
	2.Q.	702	-131	0.8427	-0.1573	84.27%	-15.73%
	3.Q.	1,159	457	1.6510	0.6510	165.10%	65.10%
	4.Q.	1,250	91	1.0785	0.0785	107.85%	7.85%
Spolu		40,877	530	x	x	x	x

Príloha E - elementárne charakteristiky dokončených trojizbových bytov							
Obdobie		Dokončené byty	Absolútny prírastok	Koeficient rastu	Koeficient prírastku	Tempo rastu	Tempo prírastku
		yt	Δ_t	k_t	$k_{\Delta t}$	T_t	$T_{\Delta t}$
2008	1.Q.	759	-	-	-	-	-
	2.Q.	1,093	334	1.4401	0.4401	144.01%	44.01%
	3.Q.	1,071	-22	0.9799	-0.0201	97.99%	-2.01%
	4.Q.	1,739	668	1.6237	0.6237	162.37%	62.37%
2009	1.Q.	1,164	-575	0.6694	-0.3306	66.94%	-33.06%
	2.Q.	925	-239	0.7947	-0.2053	79.47%	-20.53%
	3.Q.	1,336	411	1.4443	0.4443	144.43%	44.43%
	4.Q.	2,020	684	1.5120	0.5120	151.20%	51.20%
2010	1.Q.	953	-1,067	0.4718	-0.5282	47.18%	-52.82%
	2.Q.	920	-33	0.9654	-0.0346	96.54%	-3.46%
	3.Q.	1,176	256	1.2783	0.2783	127.83%	27.83%
	4.Q.	1,506	330	1.2806	0.2806	128.06%	28.06%
2011	1.Q.	985	-521	0.6541	-0.3459	65.41%	-34.59%
	2.Q.	727	-258	0.7381	-0.2619	73.81%	-26.19%
	3.Q.	914	187	1.2572	0.2572	125.72%	25.72%
	4.Q.	1,466	552	1.6039	0.6039	160.39%	60.39%
2012	1.Q.	742	-724	0.5061	-0.4939	50.61%	-49.39%
	2.Q.	934	192	1.2588	0.2588	125.88%	25.88%
	3.Q.	886	-48	0.9486	-0.0514	94.86%	-5.14%
	4.Q.	1,335	449	1.5068	0.5068	150.68%	50.68%
2013	1.Q.	900	-435	0.6742	-0.3258	67.42%	-32.58%
	2.Q.	747	-153	0.8300	-0.1700	83.00%	-17.00%
	3.Q.	859	112	1.1499	0.1499	114.99%	14.99%
	4.Q.	1,343	484	1.5634	0.5634	156.34%	56.34%
2014	1.Q.	829	-514	0.6173	-0.3827	61.73%	-38.27%
	2.Q.	852	23	1.0277	0.0277	102.77%	2.77%
	3.Q.	756	-96	0.8873	-0.1127	88.73%	-11.27%
	4.Q.	1,359	603	1.7976	0.7976	179.76%	79.76%
2015	1.Q.	1,060	-299	0.7800	-0.2200	78.00%	-22.00%
	2.Q.	692	-368	0.6528	-0.3472	65.28%	-34.72%
	3.Q.	829	137	1.1980	0.1980	119.80%	19.80%
	4.Q.	1,532	703	1.8480	0.8480	184.80%	84.80%
2016	1.Q.	809	-723	0.5281	-0.4719	52.81%	-47.19%
	2.Q.	853	44	1.0544	0.0544	105.44%	5.44%
	3.Q.	1,070	217	1.2544	0.2544	125.44%	25.44%
	4.Q.	1,323	253	1.2364	0.2364	123.64%	23.64%
2017	1.Q.	1,020	-303	0.7710	-0.2290	77.10%	-22.90%
	2.Q.	793	-227	0.7775	-0.2225	77.75%	-22.25%
	3.Q.	1,078	285	1.3594	0.3594	135.94%	35.94%
	4.Q.	1,474	396	1.3673	0.3673	136.73%	36.73%
2018	1.Q.	1,167	-307	0.7917	-0.2083	79.17%	-20.83%
	2.Q.	977	-190	0.8372	-0.1628	83.72%	-16.28%
	3.Q.	1,068	91	1.0931	0.0931	109.31%	9.31%
	4.Q.	1,545	477	1.4466	0.4466	144.66%	44.66%
2019	1.Q.	1,148	-397	0.7430	-0.2570	74.30%	-25.70%
	2.Q.	1,153	5	1.0044	0.0044	100.44%	0.44%
	3.Q.	1,134	-19	0.9835	-0.0165	98.35%	-1.65%
	4.Q.	1,669	535	1.4718	0.4718	147.18%	47.18%
2020	1.Q.	1,088	-581	0.6519	-0.3481	65.19%	-34.81%
	2.Q.	1,037	-51	0.9531	-0.0469	95.31%	-4.69%
	3.Q.	1,315	278	1.2681	0.2681	126.81%	26.81%
	4.Q.	1,564	249	1.1894	0.1894	118.94%	18.94%
Spolu		57,694	805	x	x	x	x

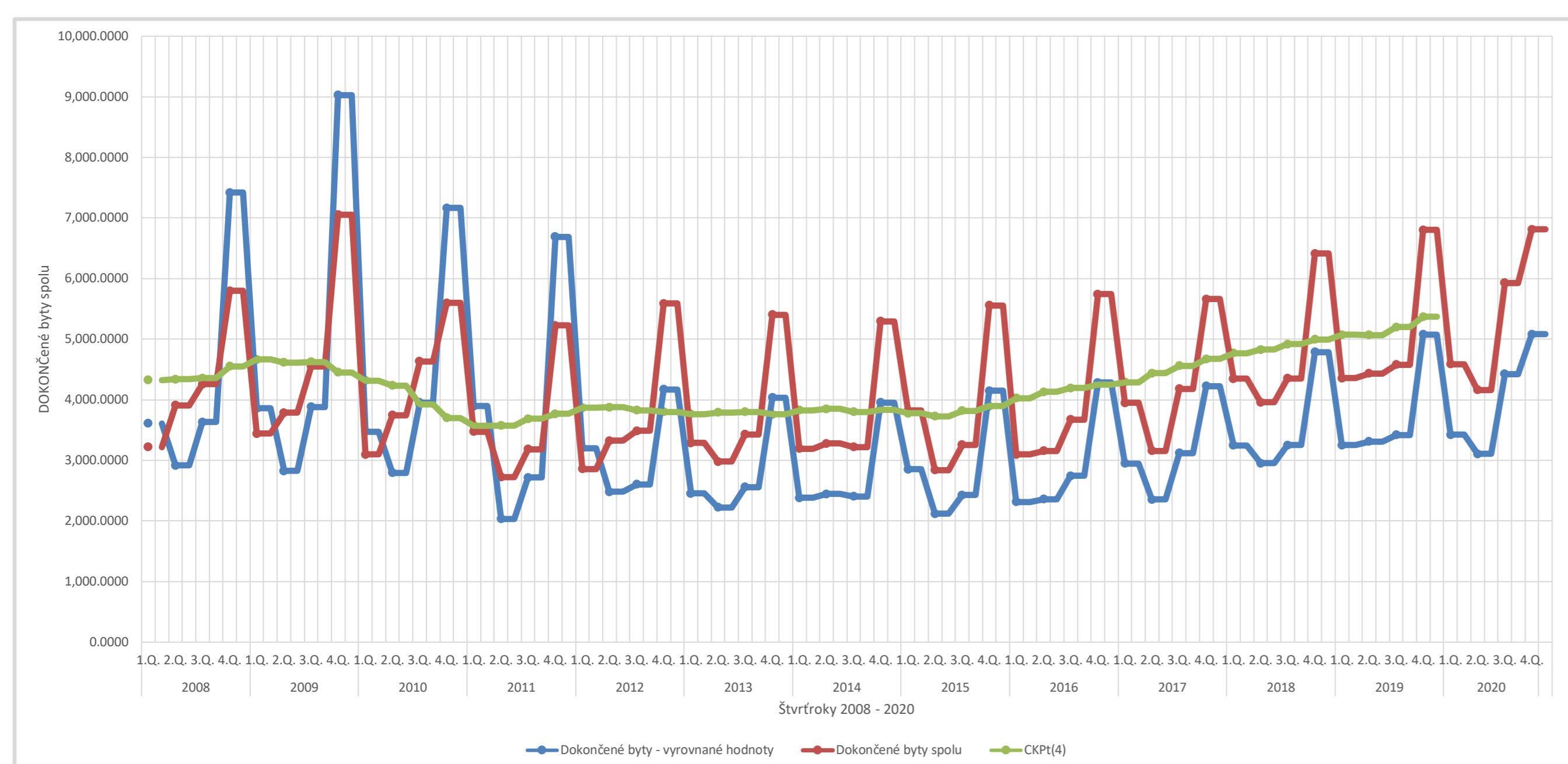
Príloha F - elementárne charakteristiky dokončených štvor a viac izbových bytov							
Obdobie		Dokončené byty štvor a viacizbové	Absolútny prírastok	Koeficient rastu	Koeficient prírastku	Tempo rastu	Tempo prírastku
		<i>y_t</i>	Δ_t	k_t	$k_{\Delta t}$	T_t	$T_{\Delta t}$
2008	1.Q.	1,338	-	-	-	-	-
	2.Q.	1,413	75	1.0561	0.0561	105.61%	5.61%
	3.Q.	1,521	108	1.0764	0.0764	107.64%	7.64%
	4.Q.	2,255	734	1.4826	0.4826	148.26%	48.26%
2009	1.Q.	1,393	-862	0.6177	-0.3823	61.77%	-38.23%
	2.Q.	1,597	204	1.1464	0.1464	114.64%	14.64%
	3.Q.	1,649	52	1.0326	0.0326	103.26%	3.26%
	4.Q.	2,713	1,064	1.6452	0.6452	164.52%	64.52%
2010	1.Q.	1,387	-1,326	0.5112	-0.4888	51.12%	-48.88%
	2.Q.	1,703	316	1.2278	0.2278	122.78%	22.78%
	3.Q.	1,794	91	1.0534	0.0534	105.34%	5.34%
	4.Q.	2,369	575	1.3205	0.3205	132.05%	32.05%
2011	1.Q.	1,371	-998	0.5787	-0.4213	57.87%	-42.13%
	2.Q.	1,506	135	1.0985	0.0985	109.85%	9.85%
	3.Q.	1,428	-78	0.9482	-0.0518	94.82%	-5.18%
	4.Q.	2,299	871	1.6099	0.6099	160.99%	60.99%
2012	1.Q.	1,338	-961	0.5820	-0.4180	58.20%	-41.80%
	2.Q.	1,597	259	1.1936	0.1936	119.36%	19.36%
	3.Q.	1,799	202	1.1265	0.1265	112.65%	12.65%
	4.Q.	2,814	1,015	1.5642	0.5642	156.42%	56.42%
2013	1.Q.	1,479	-1,335	0.5256	-0.4744	52.56%	-47.44%
	2.Q.	1,539	60	1.0406	0.0406	104.06%	4.06%
	3.Q.	1,762	223	1.1449	0.1449	114.49%	14.49%
	4.Q.	2,890	1,128	1.6402	0.6402	164.02%	64.02%
2014	1.Q.	1,654	-1,236	0.5723	-0.4277	57.23%	-42.77%
	2.Q.	1,614	-40	0.9758	-0.0242	97.58%	-2.42%
	3.Q.	1,739	125	1.0774	0.0774	107.74%	7.74%
	4.Q.	2,609	870	1.5003	0.5003	150.03%	50.03%
2015	1.Q.	1,504	-1,105	0.5765	-0.4235	57.65%	-42.35%
	2.Q.	1,616	112	1.0745	0.0745	107.45%	7.45%
	3.Q.	1,682	66	1.0408	0.0408	104.08%	4.08%
	4.Q.	2,766	1,084	1.6445	0.6445	164.45%	64.45%
2016	1.Q.	1,635	-1,131	0.5911	-0.4089	59.11%	-40.89%
	2.Q.	1,845	210	1.1284	0.1284	112.84%	12.84%
	3.Q.	1,915	70	1.0379	0.0379	103.79%	3.79%
	4.Q.	3,068	1,153	1.6021	0.6021	160.21%	60.21%
2017	1.Q.	1,922	-1,146	0.6265	-0.3735	62.65%	-37.35%
	2.Q.	1,763	-159	0.9173	-0.0827	91.73%	-8.27%
	3.Q.	2,046	283	1.1605	0.1605	116.05%	16.05%
	4.Q.	2,901	855	1.4179	0.4179	141.79%	41.79%
2018	1.Q.	2,054	-847	0.7080	-0.2920	70.80%	-29.20%
	2.Q.	2,221	167	1.0813	0.0813	108.13%	8.13%
	3.Q.	2,273	52	1.0234	0.0234	102.34%	2.34%
	4.Q.	3,511	1,238	1.5447	0.5447	154.47%	54.47%
2019	1.Q.	2,149	-1,362	0.6121	-0.3879	61.21%	-38.79%
	2.Q.	2,250	101	1.0470	0.0470	104.70%	4.70%
	3.Q.	2,449	199	1.0884	0.0884	108.84%	8.84%
	4.Q.	3,496	1,047	1.4275	0.4275	142.75%	42.75%
2020	1.Q.	2,260	-1,236	0.6465	-0.3535	64.65%	-35.35%
	2.Q.	2,145	-115	0.9491	-0.0509	94.91%	-5.09%
	3.Q.	2,881	736	1.3431	0.3431	134.31%	34.31%
	4.Q.	3,736	855	1.2968	0.2968	129.68%	29.68%
Spolu		106,658	2,398	x	x	x	x

Príloha G - priemerné obytné a podlahové plochy bytov				
Obdobie		Priemerná obytná plocha dokončeného bytu (m2)	Priem. obytná plocha dokonč. bytu v rodin. domoch (m2)	Priem. podlahová plocha dokončeného bytu (m2)
2008	1.Q.	71,7	89,7	115,6
	2.Q.	69,4	88,8	108,2
	3.Q.	69,1	89,3	108,7
	4.Q.	70,7	90,0	118,2
2009	1.Q.	71,3	86,7	116,0
	2.Q.	70,5	91,1	115,9
	3.Q.	69,2	89,6	112,2
	4.Q.	70,3	88,9	107,3
2010	1.Q.	74,0	88,0	118,7
	2.Q.	74,8	91,6	117,0
	3.Q.	68,1	89,5	106,5
	4.Q.	70,7	89,2	113,5
2011	1.Q.	69,6	88,6	112,8
	2.Q.	77,3	87,7	125,1
	3.Q.	71,1	85,7	115,1
	4.Q.	70,7	89,5	113,5
2012	1.Q.	71,7	88,7	116,8
	2.Q.	71,7	87,0	116,6
	3.Q.	71,1	87,3	117,3
	4.Q.	72,0	88,2	117,6
2013	1.Q.	72,2	89,4	114,6
	2.Q.	72,7	86,4	118,3
	3.Q.	74,3	87	119,8
	4.Q.	74,9	88,5	122,9
2014	1.Q.	73,1	86,5	120,7
	2.Q.	73,2	85,2	116,4
	3.Q.	73,8	85,8	121,9
	4.Q.	71,1	85,8	117,1
2015	1.Q.	66,6	86,3	105,4
	2.Q.	75,1	84,6	121,8
	3.Q.	72,3	85,5	116,0
	4.Q.	71,9	85,4	113,9
2016	1.Q.	74,9	86,0	120,5
	2.Q.	76,1	83,9	121,8
	3.Q.	74,1	83,5	118,5
	4.Q.	71,8	85,1	114,8
2017	1.Q.	68,8	82,8	111,7
	2.Q.	73	80,6	118,4
	3.Q.	68,2	80,8	110,3
	4.Q.	71,8	84	112,4
2018	1.Q.	69	82,8	108,5
	2.Q.	71,3	81,8	113,5
	3.Q.	70,6	81,4	111,5
	4.Q.	72,1	83,3	114,6
2019	1.Q.	68,8	83,3	107,9
	2.Q.	69,1	81,6	110,4
	3.Q.	70,9	82	111,3
	4.Q.	69,7	82,6	109,4
2020	1.Q.	69,6	84,1	109,3
	2.Q.	65,3	82,5	103,1
	3.Q.	67,7	83	106,7
	4.Q.	81,1	83,3	112,9

Príloha H - sezónne indexy, vyrovnané hodnoty a časové premenné dokončených bytov spolu

Obdobie	Dokončené byty spolu Y _t	Kľúčové súčty	Kľúčové priemery	Centrované kľúčové priemery	Sezónne indexy (S _t)	Priemerné S _t	Korigované priemerné S _t	Vyrovnané hodnoty Y _{t-vyr}	1.				2.				3.			
									t _t	Y _{t-vyr} * t _t	t _t ²	t _t	Y _{t-vyr} * t _t	t _t ²	t _t	Y _{t-vyr} * t _t	t _t ²			
2008	1.Q.	3,219				1.2205	1.1209	3,608.2205	-51	-184,019.25	2,601	-25.5	-92,009.62	650	1	3,608.22	1			
	2.Q.	3,907				0.8127	0.7464	2,916.1307	-49	-142,890.40	2,401	-24.5	-71,445.20	600	2	5,832.26	4			
	3.Q.	4,259	17,184.00	4,296.00	4,324.00	0.9287	0.8530	3,632.8292	-47	-170,742.97	2,209	-23.5	-85,371.49	552	3	10,898.49	9			
	4.Q.	5,799	17,408.00	4,352.00	4,337.00	1.34	1.3934	7,421.1155	-45	-333,950.20	2,025	-22.5	-166,975.10	506	4	29,684.46	16			
2009	1.Q.	3,443	17,288.00	4,322.00	4,358.38	0.79		3,859.3051	-43	-165,950.12	1,849	-21.5	-82,975.06	462	5	19,296.53	25			
	2.Q.	3,787	17,579.00	4,394.75	4,551.63	0.83		2,826.5644	-41	-115,889.14	1,681	-20.5	-57,944.57	420	6	16,959.39	36			
	3.Q.	4,550	18,834.00	4,708.50	4,665.38	0.98		3,881.0456	-39	-151,360.78	1,521	-19.5	-75,680.39	380	7	27,167.32	49			
	4.Q.	7,054	18,489.00	4,622.25	4,617.00	1.53		9,027.1682	-37	-334,005.22	1,369	-18.5	-167,002.61	342	8	72,217.35	64			
2010	1.Q.	3,098	18,447.00	4,611.75	4,622.25	0.67		3,472.5900	-35	-121,540.65	1,225	-17.5	-60,770.32	306	9	31,253.31	81			
	2.Q.	3,745	18,531.00	4,632.75	4,450.88	0.84		2,795.2161	-33	-92,242.13	1,089	-16.5	-46,121.07	272	10	27,952.16	100			
	3.Q.	4,634	17,076.00	4,269.00	4,315.88	1.07		3,952.6956	-31	-122,533.56	961	-15.5	-61,266.78	240	11	43,479.65	121			
	4.Q.	5,599	17,451.00	4,362.75	4,235.00	1.32		7,165.1708	-29	-207,789.95	841	-14.5	-103,894.98	210	12	85,982.05	144			
2011	1.Q.	3,473	16,429.00	4,107.25	3,926.00	0.88		3,892.9325	-27	-105,109.18	729	-13.5	-52,554.59	182	13	50,608.12	169			
	2.Q.	2,723	14,979.00	3,744.75	3,698.38	0.74		2,032.4095	-25	-50,810.24	625	-12.5	-25,405.12	156	14	28,453.73	196			
	3.Q.	3,184	14,608.00	3,652.00	3,574.88	0.89		2,715.8789	-23	-62,465.22	529	-11.5	-31,232.61	132	15	40,738.18	225			
	4.Q.	5,228	13,991.00	3,497.75	3,572.75	1.46		6,690.3935	-21	-140,498.26	441	-10.5	-70,249.13	110	16	107,046.30	256			
2012	1.Q.	2,856	14,591.00	3,647.75	3,685.63	0.77		3,201.3289	-19	-60,825.25	361	-9.5	-30,412.62	90	17	54,422.59	289			
	2.Q.	3,323	14,894.00	3,723.50	3,768.63	0.88		2,480.2412	-17	-42,164.10	289	-8.5	-21,082.05	72	18	44,644.34	324			
	3.Q.	3,487	15,255.00	3,813.75	3,867.63	0.90		2,602.6485	-15	-39,039.73	225	-7.5	-19,519.86	56	19	49,450.32	361			
	4.Q.	5,589	15,686.00	3,921.50	3,878.75	1.44		4,171.5522	-13	-54,230.18	169	-6.5	-27,115.09	42	20	83,431.04	400			
2013	1.Q.	3,287	15,344.00	3,836.00	3,828.50	0.86		2,453.3713	-11	-26,987.08	121	-5.5	-13,493.54	30	21	51,520.80	441			
	2.Q.	2,981	15,284.00	3,821.00	3,798.00	0.78		2,224.9771	-9	-20,024.79	81	-4.5	-10,012.40	20	22	48,949.50	484			
	3.Q.	3,427	15,100.00	3,775.00	3,763.13	0.91		2,557.8653	-7	-17,905.06	49	-3.5	-8,952.53	12	23	58,830.90	529			
	4.Q.	5,405	15,005.00	3,751.25	3,788.38	1.43		4,034.2172	-5	-20,171.09	25	-2.5	-10,085.54	6	24	96,821.21	576			
2014	1.Q.	3,192	15,302.00	3,825.50	3,799.75	0.84		2,382.4646	-3	-7,147.39	9	-1.5	-3,573.70	2	25	59,561.61	625			
	2.Q.	3,278	15,096.00	3,774.00	3,760.13	0.87		2,446.6538	-1	-2,446.65	1	-0.5	-1,223.33	0	26	63,613.00	676			
	3.Q.	3,221	14,985.00	3,746.25	3,825.13	0.84		2,404.1098	1	2,404.11	1	0.5	1,202.05	0	27	64,910.96	729			
	4.Q.	5,294	15,616.00	3,904.00	3,849.13	1.38		3,951.3683	3	11,854.10	9	1.5	5,927.05	2	28	110,638.31	784			
2015	1.Q.	3,823	15,177.00	3,794.25	3,798.38	1.01		2,853.4343	5	14,267.17	25	2.5	7,133.59	6	29	82,749.59	841			
	2.Q.	2,839	15,210.00	3,802.50	3,835.13	0.74		2,118.9903	7	14,832.93	49	3.5	7,416.47	12	30	63,569.71	900			
	3.Q.	3,254	15,471.00	3,867.75	3,777.25	0.86		2,428.7405	9	21,858.66	81	4.5	10,929.33	20	31	75,290.96	961			
	4.Q.	5,555	14,747.00	3,686.75	3,726.63	1.49		4,146.1751	11	45,607.93	121	5.5	22,803.96	30	32	132,677.60	1,024			
2016	1.Q.	3,099	15,066.00	3,766.50	3,819.00	0.81		2,313.0507	13	30,069.66	169	6.5	15,034.83	42	33	76,330.67	1,089			
	2.Q.	3,158	15,486.00	3,871.50	3,894.75	0.81		2,357.0875	15	35,356.31	225	7.5	17,678.16	56	34	80,140.97	1,156			
	3.Q.	3,674	15,672.00	3,918.00	4,024.00	0.91		2,742.2227	17	46,617.79	289	8.5	23,308.89	72	35	95,977.80	1,225			
	4.Q.	5,741	16,520.00	4,130.00	4,129.63	1.39		4,285.0029	19	81,415.06	361	9.5	40,707.53	90	36	154,260.10	1,296			
2017	1.Q.	3,947	16,517.00	4,129.25	4,192.75	0.94		2,945.9861	21	61,865.71	441	10.5	30,932.85	110	37	109,001.49	1,369			
	2.Q.	3,155	17,025.00	4,256.25	4,246.38	0.74		2,354.8483	23	54,161.51	529	11.5	27,080.76	132	38	89,484.24	1,444			
	3.Q.	4,182	16,946.00	4,236.50	4,286.63	0.98		3,121.3869	25	78,034.67	625	12.5	39,017.34	156	39	121,734.09	1,521			
	4.Q.	5,662	17,347.00	4,336.75	4,436.88	1.28		4,226.0384	27	114,103.04	729	13.5	57,051.52	182	40	169,041.54	1,600			
2018	1.Q.	4,348	18,148.00	4,537.00	4,558.50	0.95		3,245.2870	29	94,113.32	841	14.5	47,056.66	210	41	133,056.77	1,681			
	2.Q.	3,956	18,320.00	4,580.00	4,673.88	0.85		2,952.7036	31	91,533.81	961	15.5	45,766.91	240	42	124,013.55	1,764			
	3.Q.	4,354	19,071.00	4,767.75	4,768.75	0.91		3,249.7653	33	107,242.26	1,089	16.5	53,621.13	272	43	139,739.91	1,849			
	4.Q.	6,413	19,079.00	4,769.75	4,829.75	1.33		4,786.5744	35	167,530.10	1,225	17.5	83,765.05	306	44	210,609.27	1,936			
2019	1.Q.	4,356	19,559.00	4,889.75	4,917.75	0.89		3,251.2581	37	120,296.55	1,369	18.5	60,148.27	342	45	146,306.61	2,025			
	2.Q.	4,436	19,783.00	4,945.75	4,994.25	0.89		3,310.9690	39	129,127.79	1,521	19.5	64,563.89	380	46	152,304.57	2,116			
	3.Q.	4,578	20,171.00	5,042.75	5,071.63	0.90		3,416.9558	41	140,095.19	1,681	20.5	70,047.59	420	47	160,596.92	2,209			
	4.Q.	6,801	20,402.00	5,100.50	5,066.50	1.34		5,076.1722	43	218,275.41	1,849	21.5	109,137.70	462	48	243,656.27	2,304			
2020	1.Q.	4,587	20,130.00	5,032.50	5,201.38	0.88		3,423.6733	45	154,065.30	2,025	22.5	77,032.65	506	49	167,759.99	2,401			
	2.Q.	4,164	21,481.00	5,370.25	5,371.38	0.78		3,107.9519	47	146,073.74	2,209	23.5	73,036.87	552	50	155,397.60	2,500			
	3.Q.	5,929	21,490.00	5,372.50			4,425.3235	49	216,840.85	2,401	24.5	108,420.43	600	51	225,691.50	2,601				
	4.Q.	6,810					5,082.8897	51	259,227.37	2,601	25.5	129,613.69	650	52	264,310.26	2,704				
Spolu		221,863	x	x	x	x	4.3552	4.0000	186,022.95	0	-335,868.26	46,852	0	-167,934.13	11,713	1,378	4,761,674.10	48,230		

$$KK = \frac{4}{4.35522594629898} = 0.918436850193536$$



1.

$$b_0 = \frac{\sum Y_{t-vyr}}{T} = \frac{186,022.95}{52} = 3,577.3645$$

$$b_1 = \frac{\sum Y_{t-vyr} * t_t}{\sum t_t^2} = \frac{-335,868.26}{46,852} = -7.1687$$

$$y_t' = b_0 + b_1 * t_t$$

$$y_t' = 3,577.3645 - 7.1687 * t_t$$

2.

$$b_0 = \frac{\sum Y_{t-vyr}}{T} = \frac{186,022.95}{52} = 3,577.3645$$

$$b_1 = \frac{\sum Y_{t-vyr} * t_t}{\sum t_t^2} = \frac{-167,934.13}{11,713} = -14.3374$$

$$y_t' = b_0 + b_1 * t_t$$

$$y_t' = 3,577.3645 - 14.3374 * t_t$$

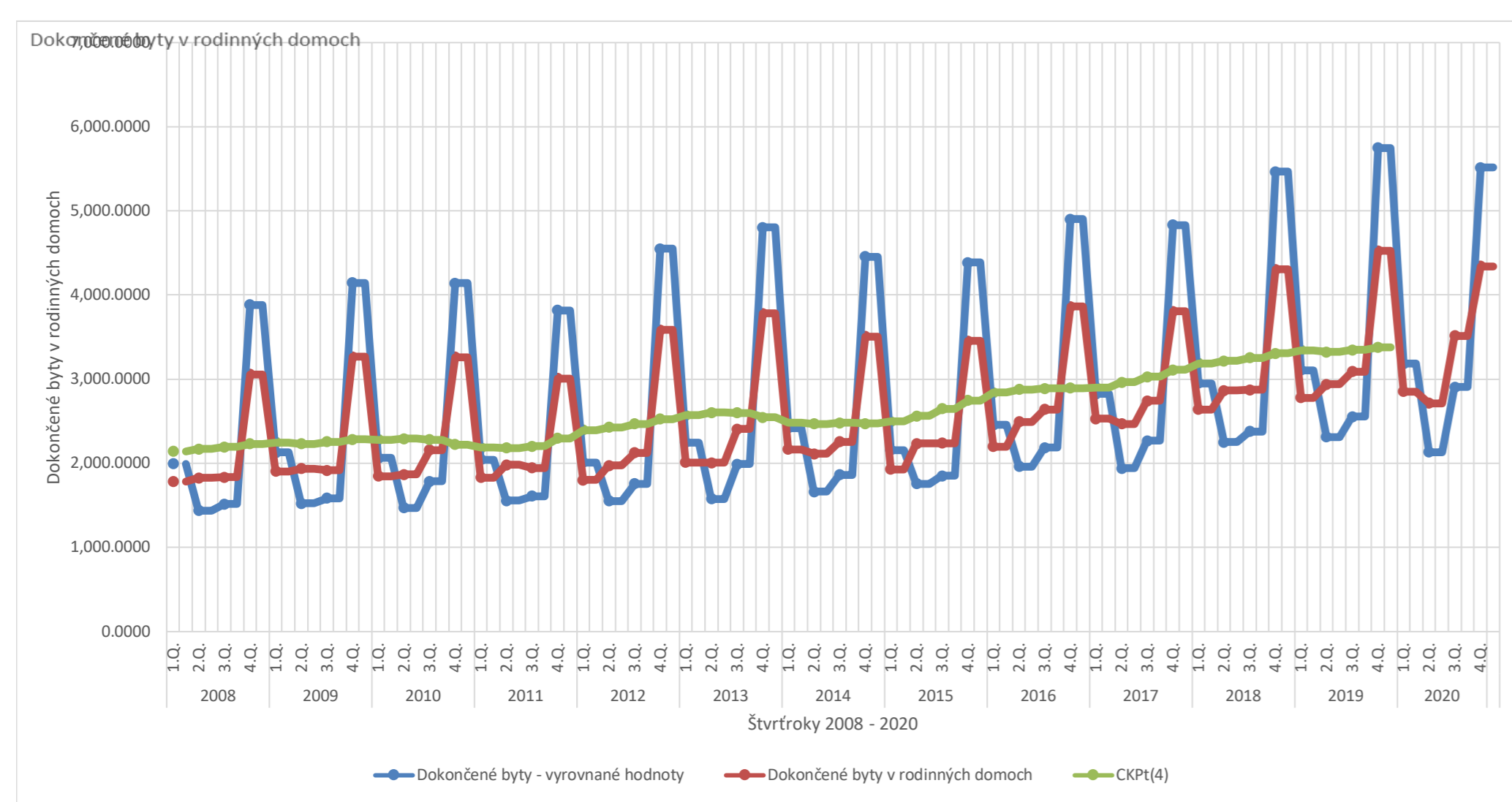
3.

$\sum Y_{t-vyr}$	=	T	*	b_0	+	b_1	*	$\sum t_t$
$\sum Y_{t-vyr} * t_t$	=	b_0	*	$\sum t$				

Príloha I - sezónne indexy, vyrovnané hodnoty a časové premenné dokončených bytov v rodinných domoch

Obdobie	Dokončené byty v rodinných domoch yt	Kľúčové súčty	Kľúčové priemery	Centrovane kľúčové priemery	Sezónne indexy (S _t)	Priemerné S _t	Korigované priemerné S _t	Vyrovnané hodnoty Y _{t-vyr}	1.		2.		3.					
									t _t	Y _{t-vyr} * t _t	t _t ²	t _t	Y _{t-vyr} * t _t	t _t ²	t _t	Y _{t-vyr} * t _t	t _t ²	
2008	1.Q.	1783				1.2245	1.1173	1,992.2144	-51	-101,602.94	2,601	-25.5	-50,801.47	650	1	1,992.21	1	
	2.Q.	1827				0.8616	0.7862	1,436.4470	-49	-70,385.90	2,401	-24.5	-35,192.95	600	2	2,872.89	4	
	3.Q.	1833	8,502.00	2,125.50	2,140.88	0.86	0.9060	1,515.4281	-47	-71,225.12	2,209	-23.5	-35,612.56	552	3	4,546.28	9	
	4.Q.	3059	8,625.00	2,156.25	2,169.88	1.41	1.3914	3,883.9556	-45	-174,778.00	2,025	-22.5	-87,389.00	506	4	15,535.82	16	
2009	1.Q.	1906	8,734.00	2,183.50	2,193.75	0.87		2,129.6471	-43	-91,574.82	1,849	-21.5	-45,787.41	462	5	10,648.24	25	
	2.Q.	1936	8,816.00	2,204.00	2,229.75	0.87		1,522.1464	-41	-62,408.00	1,681	-20.5	-31,204.00	420	6	9,132.88	36	
	3.Q.	1915	9,022.00	2,255.50	2,248.25	0.85		1,583.2214	-39	-61,745.63	1,521	-19.5	-30,872.82	380	7	11,082.55	49	
	4.Q.	3265	8,964.00	2,241.00	2,232.50	1.46		4,145.5100	-37	-153,383.87	1,369	-18.5	-76,691.94	342	8	33,164.08	64	
2010	1.Q.	1848	8,896.00	2,224.00	2,254.38	0.82		2,064.8414	-35	-72,269.45	1,225	-17.5	-36,134.73	306	9	18,583.57	81	
	2.Q.	1868	9,139.00	2,284.75	2,284.38	0.82		1,468.6826	-33	-48,466.52	1,089	-16.5	-24,233.26	272	10	14,686.83	100	
	3.Q.	2158	9,136.00	2,284.00	2,281.63	0.95		1,784.1210	-31	-55,307.75	961	-15.5	-27,653.88	240	11	19,625.33	121	
	4.Q.	3262	9,117.00	2,279.25	2,293.38	1.42		4,141.7010	-29	-120,109.33	841	-14.5	-60,054.66	210	12	49,700.41	144	
2011	1.Q.	1829	9,230.00	2,307.50	2,281.00	0.80		2,043.6120	-27	-55,177.52	729	-13.5	-27,588.76	182	13	26,566.96	169	
	2.Q.	1981	9,018.00	2,254.50	2,222.63	0.89		1,557.5269	-25	-38,938.17	625	-12.5	-19,469.09	156	14	21,805.38	196	
	3.Q.	1946	8,763.00	2,190.75	2,187.25	0.89		1,608.8505	-23	-37,003.56	529	-11.5	-18,501.78	132	15	24,132.76	225	
	4.Q.	3007	8,735.00	2,183.75	2,182.63	1.38		3,817.9322	-21	-80,176.58	441	-10.5	-40,088.29	110	16	61,086.92	256	
2012	1.Q.	1801	8,726.00	2,181.50	2,203.63	0.82		2,012.3265	-19	-38,234.20	361	-9.5	-19,117.10	90	17	34,209.55	289	
	2.Q.	1972	8,903.00	2,225.75	2,297.75	0.86		1,550.4508	-17	-26,357.66	289	-8.5	-13,178.83	72	18	27,908.11	324	
	3.Q.	2123	9,479.00	2,369.75	2,396.00	0.89		1,755.1848	-15	-26,327.77	225	-7.5	-13,163.89	56	19	33,348.51	361	
	4.Q.	3583	9,689.00	2,422.25	2,426.75	1.48		4,549.2687	-13	-59,140.49	169	-6.5	-29,570.25	42	20	90,985.37	400	
2013	1.Q.	2011	9,725.00	2,431.25	2,466.75	0.82		2,246.9676	-11	-24,716.64	121	-5.5	-12,358.32	30	21	47,186.32	441	
	2.Q.	2008	10,009.00	2,502.25	2,527.13	0.79		1,578.7551	-9	-14,208.80	81	-4.5	-7,104.40	20	22	34,732.61	484	
	3.Q.	2407	10,208.00	2,552.00	2,571.38	0.94		1,989.9811	-7	-13,929.87	49	-3.5	-6,964.93	12	23	45,769.57	529	
	4.Q.	3782	10,363.00	2,590.75	2,603.88	1.45		4,801.9353	-5	-24,009.68	25	-2.5	-12,004.84	6	24	115,246.45	576	
2014	1.Q.	2166	10,468.00	2,617.00	2,597.88	0.83		2,420.1551	-3	-7,260.47	9	-1.5	-3,630.23	2	25	60,503.88	625	
	2.Q.	2113	10,315.00	2,578.75	2,544.50	0.83		1,661.3096	-1	-1,661.31	1	-0.5	-830.65	0	26	43,194.05	676	
	3.Q.	2254	10,041.00	2,510.25	2,480.75	0.91		1,863.4887	1	1,863.49	1	0.5	931.74	0	27	50,314.20	729	
	4.Q.	3508	9,805.00	2,451.25	2,466.50	1.42		4,454.0426	3	13,362.13	9	1.5	6,681.06	2	28	124,713.19	784	
2015	1.Q.	1930	9,927.00	2,481.75	2,480.00	0.78		2,156.4632	5	10,782.32	25	2.5	5,391.16	6	29	62,537.43	841	
	2.Q.	2235	9,913.00	2,478.25	2,471.63	0.90		1,757.2299	7	12,300.61	49	3.5	6,150.30	12	30	52,716.90	900	
	3.Q.	2240	9,860.00	2,465.00	2,498.38	0.90		1,851.9143	9	16,667.23	81	4.5	8,333.61	20	31	57,409.34	961	
	4.Q.	3455	10,127.00	2,531.75	2,564.13	1.35		4,386.7495	11	48,254.24	121	5.5	24,127.12	30	32	140,375.98	1,024	
2016	1.Q.	2197	10,386.00	2,596.50	2,646.75	0.83		2,454.7925	13	31,912.30	169	6.5	15,956.15	42	33	81,008.15	1,089	
	2.Q.	2494	10,788.00	2,697.00	2,747.88	0.91		1,960.8642	15	29,412.96	225	7.5	14,706.48	56	34	66,669.38	1,156	
	3.Q.	2642	11,195.00	2,798.75	2,840.13	0.93		2,184.2668	17	37,132.53	289	8.5	18,566.27	72	35	76,449.34	1,225	
	4.Q.	3862	11,526.00	2,881.50	2,878.50	1.34		4,903.5099	19	93,166.69	361	9.5	46,583.34	90	36	176,526.35	1,296	
2017	1.Q.	2528	11,502.00	2,875.50	2,888.00	0.88		2,824.6316	21	59,317.26	441	10.5	29,658.63	110	37	104,511.37	1,369	
	2.Q.	2470	11,602.00	2,900.50	2,893.63	0.85		1,941.9946	23	44,665.88	529	11.5	22,332.94	132	38	73,795.80	1,444	
	3.Q.	2742	11,547.00	2,886.75	2,901.00	0.95		2,266.9415	25	56,673.54	625	12.5	28,336.77	156	39	88,410.72	1,521	
	4.Q.	3807	11,661.00	2,915.25	2,964.63	1.28		4,833.6774	27	130,509.29	729	13.5	65,254.64	182	40	193,347.10	1,600	
2018	1.Q.	2642	12,056.00	3,014.00	3,030.63	0.87		2,952.0082	29	85,608.24	841	14.5	42,804.12	210	41	121,032.33	1,681	
	2.Q.	2865	12,189.00	3,047.25	3,109.50	0.92		2,252.5565	31	69,829.25	961	15.5	34,914.63	240	42	94,607.37	1,764	
	3.Q.	2875	12,687.00	3,171.75	3,189.13	0.90		2,376.8989	33	78,437.66	1,089	16.5	39,218.83	272	43	102,206.65	1,849	
	4.Q.	4305	12,826.00	3,206.50	3,215.88	1.34		5,465.9788	35	191,309.26	1,225	17.5	95,654.63	306	44	240,503.07	1,936	
2019	1.Q.	2781	12,901.00	3,225.25	3,252.25	0.86		3,107.3182	37	114,970.77	1,369	18.5	57,485.39	342	45	139,829.32	2,025	
	2.Q.	2940	13,117.00	3,279.25	3,306.88	0.89		2,311.5240	39	90,149.43	1,521	19.5	45,074.72	380	46	106,330.10	2,116	
	3.Q.	3091	13,338.00	3,334.50	3,343.25	0.92		2,555.4764	41	104,774.53	1,681	20.5	52,387.27	420	47	120,107.39	2,209	
	4.Q.	4526	13,408.00	3,352.00	3,323.63	1.36		5,746.5784	43	247,102.87	1,849	21.5	123,551.43	462	48	275,835.76	2,304	
2020	1.Q.	2851	13,181.00	3,295.25	3,348.25	0.85		3,185.5319	45	143,348.93	2,025	22.5	71,674.47	506	49	156,091.06	2,401	
	2.Q.	2713	13,605.00	3,401.25	3,378.25	0.80		2,133.0491	47	100,253.31	2,209	23.5	50,126.65	552	50	106,652.46	2,500	
	3.Q.	3515	13,421.00	3,355.25			2,906.0173	49	142,394.85	2,401	24.5	71,197.42	600	51	148,206.88	2,601		
	4.Q.	4342					5,512.9570	51	281,160.81	2,601	25.5	140,580.40	650	52	286,673.76	2,704		
Spolu		137,199	x	x	x	x	4.3836	4.0000	141,608.63	0	704,960.31	46,852	0	352,480.16	11,713	1,378	4,105,108.94	48,230

$$KK = \frac{4}{4.3835600670828} = 0.912501173448836$$



1.

$$b_0 = \frac{\sum y_{t-vyr}}{T} = \frac{141,608.63}{52} = 2,723.2430$$

$$b_1 = \frac{\sum y_{t-vyr} * t_t}{\sum t_t^2} = \frac{704,960.31}{46,852} = 15.0465$$

$$y_t' = b_0 + b_1 * t_t$$

$$y_t' = 2,723.2430 + 15.0465 * t_t$$

2.

$$b_0 = \frac{\sum y_{t-vyr}}{T} = \frac{141,608.63}{52} = 2,723.2430$$

$$b_1 = \frac{\sum y_{t-vyr} * t_t}{\sum t_t^2} = \frac{352,480.16}{11,713} = 30.0931$$

$$y_t' = b_0 + b_1 * t_t$$

$$y_t' = 2,723.2430 + 30.0931 * t_t$$

3.

$$\begin{aligned} \sum y_{t-vyr} &= T * b_0 + b_1 * \sum t_t \\ \sum y_{t-vyr} * t_t &= b_0 * \sum t_t + b_1 * \sum t_t^2 \\ 141,608.63 &= 52 * b_0 + b_1 * 1,378 \\ 4,105,108.94 &= b_0 * 1,378 + b_1 * 48,230 \end{aligned}$$

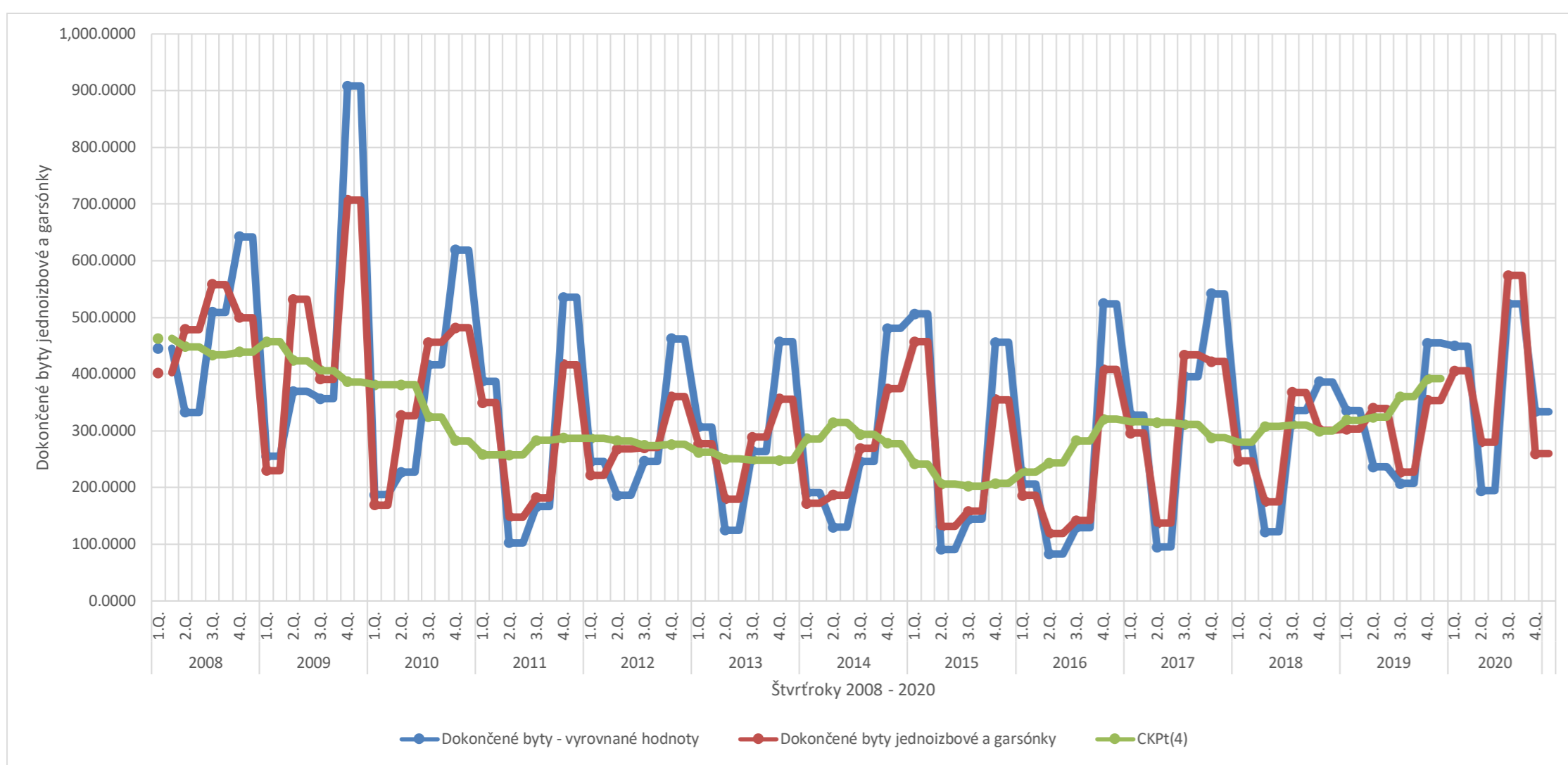
$$b_0 = \frac{141,608.63 - 1,378 * b_1}{52}$$

$$b_1 = \frac{78,944.40 - 26.5 * b_1}{927.5 - 702.25}$$

Príloha J - sezónne indexy, vyrovnané hodnoty a časové premenné dokončených jednoizbových bytov a garsoniek

Obdobie	Dokončené byty jednoizbové a garsonky y _t	Kľúčové súčty	Kľúčové priemery	Centrované kľúčové priemery	Sezónne indexy (S _t)	Priemerné S _t	Korigované priemerné S _t	Vyrovnané hodnoty Y _{t-vyr}	1.			2.			3.			
									t _t	Y _{t-vyr} * t _t	t _t ²	t _t	Y _{t-vyr} * t _t	t _t ²	t _t	Y _{t-vyr} * t _t	t _t ²	
2008	1.Q.	402				1.1758	1.1078	445.3418	-51	-22,712.43	2,601	-25.5	-11,356.22	650	1	445.34	1	
	2.Q.	479				0.7377	0.6950	332.9190	-49	-16,313.03	2,401	-24.5	-8,156.52	600	2	665.84	4	
	3.Q.	558	1,939.00	484.75	463.25	1.20	0.9685	0.9125	509.1781	-47	-23,931.37	2,209	-23.5	-11,965.69	552	3	1,527.53	9
	4.Q.	500	1,767.00	441.75	448.38	1.12	1.3635	1.2846	642.3248	-45	-28,904.62	2,025	-22.5	-14,452.31	506	4	2,569.30	16
2009	1.Q.	230	1,820.00	455.00	434.13	0.53		254.7976	-43	-10,956.29	1,849	-21.5	-5,478.15	462	5	1,273.99	25	
	2.Q.	532	1,653.00	413.25	439.13	1.21		369.7556	-41	-15,159.98	1,681	-20.5	-7,579.99	420	6	2,218.53	36	
	3.Q.	391	1,860.00	465.00	457.38	0.85		356.7897	-39	-13,914.80	1,521	-19.5	-6,957.40	380	7	2,497.53	49	
	4.Q.	707	1,799.00	449.75	424.13	1.67		908.2473	-37	-33,605.15	1,369	-18.5	-16,802.57	342	8	7,265.98	64	
2010	1.Q.	169	1,594.00	398.50	406.63	0.42		187.2208	-35	-6,552.73	1,225	-17.5	-3,276.36	306	9	1,684.99	81	
	2.Q.	327	1,659.00	414.75	386.63	0.85		227.2746	-33	-7,500.06	1,089	-16.5	-3,750.03	272	10	2,272.75	100	
	3.Q.	456	1,434.00	358.50	381.13	1.20		416.1026	-31	-12,899.18	961	-15.5	-6,449.59	240	11	4,577.13	121	
	4.Q.	482	1,615.00	403.75	381.38	1.26		619.2011	-29	-17,956.83	841	-14.5	-8,978.42	210	12	7,430.41	144	
2011	1.Q.	350	1,436.00	359.00	324.75	1.08		387.7354	-27	-10,468.86	729	-13.5	-5,234.43	182	13	5,040.56	169	
	2.Q.	148	1,162.00	290.50	282.38	0.52		102.8643	-25	-2,571.61	625	-12.5	-1,285.80	156	14	1,440.10	196	
	3.Q.	182	1,097.00	274.25	258.25	0.70		166.0760	-23	-3,819.75	529	-11.5	-1,909.87	132	15	2,491.14	225	
	4.Q.	417	969.00	242.25	257.25	1.62		535.6989	-21	-11,249.68	441	-10.5	-5,624.84	110	16	8,571.18	256	
2012	1.Q.	222	1,089.00	272.25	283.25	0.78		245.9350	-19	-4,672.77	361	-9.5	-2,336.38	90	17	4,180.90	289	
	2.Q.	268	1,177.00	294.25	287.13	0.93		186.2679	-17	-3,166.55	289	-8.5	-1,583.28	72	18	3,352.82	324	
	3.Q.	270	1,120.00	280.00	286.88	0.94		246.3765	-15	-3,695.65	225	-7.5	-1,847.82	56	19	4,681.15	361	
	4.Q.	360	1,175.00	293.75	282.75	1.27		462.4739	-13	-6,012.16	169	-6.5	-3,006.08	42	20	9,249.48	400	
2013	1.Q.	277	1,087.00	271.75	274.13	1.01		306.8649	-11	-3,375.51	121	-5.5	-1,687.76	30	21	6,444.16	441	
	2.Q.	180	1,106.00	276.50	276.00	0.65		125.1053	-9	-1,125.95	81	-4.5	-562.97	20	22	2,752.32	484	
	3.Q.	289	1,102.00	275.50	262.38	1.10		263.7141	-7	-1,846.00	49	-3.5	-923.00	12	23	6,065.42	529	
	4.Q.	356	997.00	249.25	250.13	1.42		457.3353	-5	-2,286.68	25	-2.5	-1,143.34	6	24	10,976.05	576	
2014	1.Q.	172	1,004.00	251.00	248.50	0.69		190.5443	-3	-571.63	9	-1.5	-285.82	2	25	4,763.61	625	
	2.Q.	187	984.00	246.00	248.25	0.75		129.9705	-1	-129.97	1	-0.5	-64.99	0	26	3,379.23	676	
	3.Q.	269	1,002.00	250.50	286.13	0.94		245.4640	1	245.46	1	0.5	122.73	0	27	6,627.53	729	
	4.Q.	374	1,287.00	321.75	314.75	1.19		480.4590	3	1,441.38	9	1.5	720.69	2	28	13,452.85	784	
2015	1.Q.	457	1,231.00	307.75	293.88	1.56		506.2717	5	2,531.36	25	2.5	1,265.68	6	29	14,681.88	841	
	2.Q.	131	1,120.00	280.00	277.63	0.47		91.0488	7	637.34	49	3.5	318.67	12	30	2,731.47	900	
	3.Q.	158	1,101.00	275.25	241.38	0.65		144.1759	9	1,297.58	81	4.5	648.79	20	31	4,469.45	961	
	4.Q.	355	830.00	207.50	206.00	1.72		456.0506	11	5,016.56	121	5.5	2,508.28	30	32	14,593.62	1,024	
2016	1.Q.	186	818.00	204.50	202.50	0.92		206.0537	13	2,678.70	169	6.5	1,339.35	42	33	6,799.77	1,089	
	2.Q.	119	802.00	200.50	207.13	0.57		82.7085	15	1,240.63	225	7.5	620.31	56	34	2,812.09	1,156	
	3.Q.	142	855.00	213.75	227.50	0.62		129.5758	17	2,202.79	289	8.5	1,101.39	72	35	4,535.15	1,225	
	4.Q.	408	965.00	241.25	243.50	1.68		524.1370	19	9,958.60	361	9.5	4,979.30	90	36	18,868.93	1,296	
2017	1.Q.	296	983.00	245.75	282.25	1.05		327.9134	21	6,886.18	441	10.5	3,443.09	110	37	12,132.80	1,369	
	2.Q.	137	1,275.00	318.75	320.50	0.43		95.2190	23	2,190.04	529	11.5	1,095.02	132	38	3,618.32	1,444	
	3.Q.	434	1,289.00	322.25	316.13	1.37		396.0274	25	9,900.69	625	12.5	4,950.34	156	39	15,445.07	1,521	
	4.Q.	422	1,240.00	310.00	314.75	1.34		542.1221	27	14,637.30	729	13.5	7,318.65	182	40	21,684.89	1,600	
2018	1.Q.	247	1,278.00	319.50	311.25	0.79		273.6304	29	7,935.28	841	14.5	3,967.64	210	41	11,218.85	1,681	
	2.Q.	175	1,212.00	303.00	287.88	0.61		121.6301	31	3,770.53	961	15.5	1,885.27	240	42	5,108.47	1,764	
	3.Q.	368	1,091.00	272.75	279.75	1.32		335.8021	33	11,081.47	1,089	16.5	5,540.73	272	43	14,439.49	1,849	
	4.Q.	301	1,147.00	286.75	307.38	0.98		386.6795	35	13,533.78	1,225	17.5	6,766.89	306	44	17,013.90	1,936	
2019	1.Q.	303	1,312.00	328.00	310.38	0.98		335.6681	37	12,419.72	1,369	18.5	6,209.86	342	45	15,105.06	2,025	
	2.Q.	340	1,171.00	292.75	299.38	1.14		236.3100	39	9,216.09	1,521	19.5	4,608.04	380	46	10,870.26	2,116	
	3.Q.	227	1,224.00	306.00	318.88	0.71		207.1388	41	8,492.69	1,681	20.5	4,246.34	420	47	9,735.52	2,209	
	4.Q.	354	1,327.00	331.75	324.25	1.09		454.7660	43	19,554.94	1,849	21.5	9,777.47	462	48	21,828.77	2,304	
2020	1.Q.	406	1,267.00	316.75	360.13	1.13		449.7731	45	20,239.79	2,025	22.5	10,119.89	506	49	22,038.88	2,401	
	2.Q.	280	1,614.00	403.50	391.75	0.71		194.6082	47	9,146.59	2,209	23.5	4,573.29	552	50	9,730.41	2,500	
	3.Q.	574	1,520.00	380.00			523.7782	49	25,665.13	2,401	24.5	12,832.57	600	51	26,712.69	2,601		
	4.Q.	260					334.0089	51	17,034.45	2,601	25.5	8,517.23	650	52	17,368.46	2,704		
Spolu		16,634	x	x	x	x	4,2456	4,0000	17,157.14	0	-46,444.17	46,852	0	-23,222.08	11,713	1,378	431,442.01	48,230

$$KK = \frac{4}{4.24559437890959} = 0.942153122274327$$



1.

$$b_0 = \frac{\sum Y_{t-vyr}}{T} = \frac{17,157.14}{52} = 329.9449$$

$$b_1 = \frac{\sum Y_{t-vyr} * t_t}{\sum t_t^2} = \frac{-46,444.17}{46,852} = -0.9913$$

$$y_t' = b_0 + b_1 * t_t$$

$$y_t' = 329.9449 - 0.9913 * t_t$$

2.

$$b_0 = \frac{\sum Y_{t-vyr}}{T} = \frac{17,157.14}{52} = 329.9449$$

$$b_1 = \frac{\sum Y_{t-vyr} * t_t}{\sum t_t^2} = \frac{-23,222.08}{11,713} = -1.9826$$

$$y_t' = b_0 + b_1 * t_t$$

$$y_t' = 329.9449 - 1.9826 * t_t$$

3.

$$\begin{aligned} \sum Y_{t-vyr} &= T * b_0 + b_1 * \sum t_t \\ \sum Y_{t-vyr} * t_t &= b_0 * \sum t_t + b_1 * \sum t_t^2 \\ 17,157.14 &= 52 * b_0 + b_1 * 1,378 \\ 431,442.01 &= b_0 * 1,378 + b_1 * 48,230 \end{aligned}$$

$$b_0 = \frac{17,157.14 - 1,378 * b_1}{52}$$

$$b_1 = \frac{8,296.96 - 26.5 * b_1}{927.5 - 702.25}$$

$$b_1 = -1.9826$$

$$b_0 = 382.4836$$

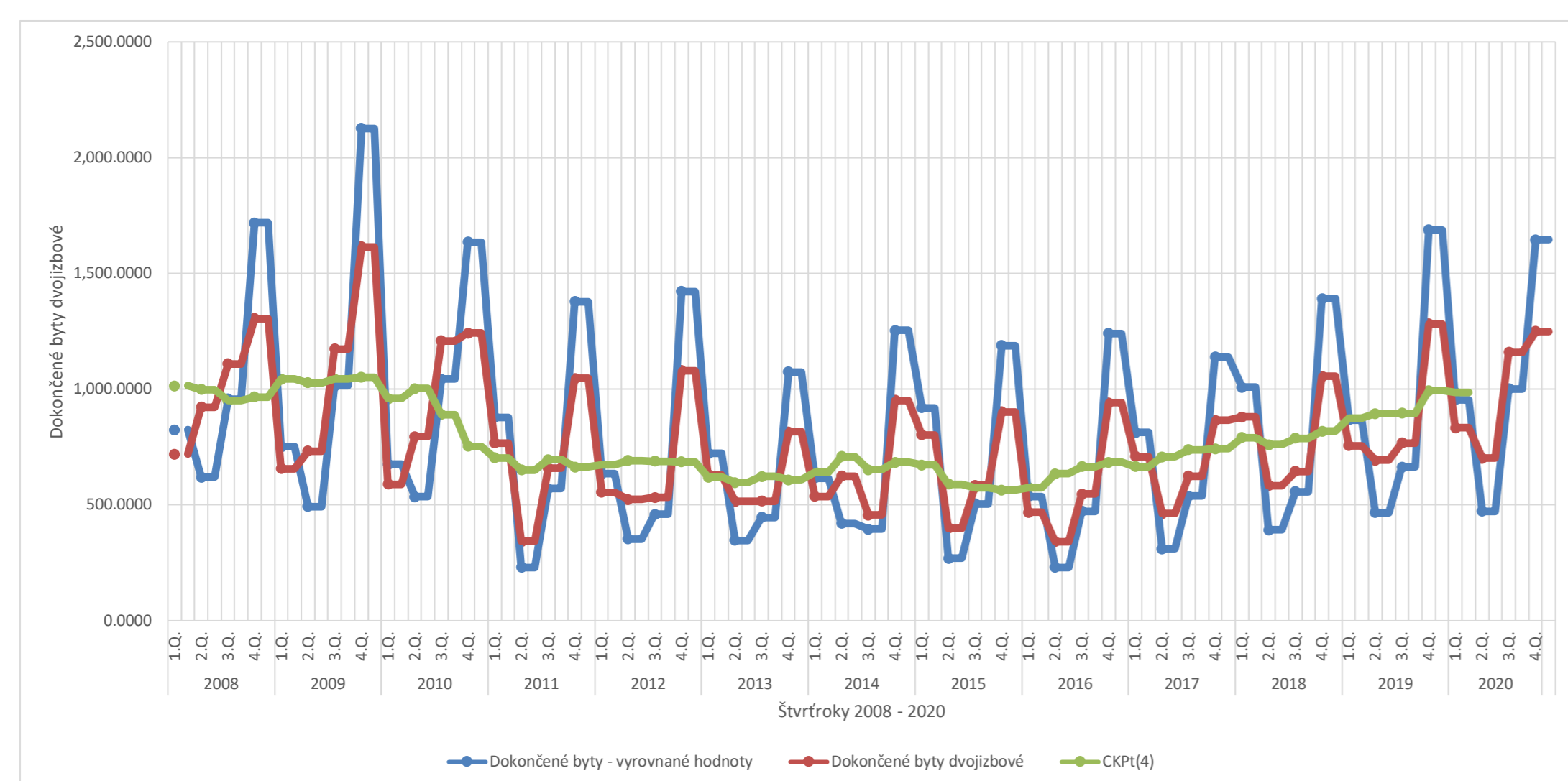
$$y_t' = b_0 + b_1 * t_t$$

$$y_t' = 382.4836 - 1.9826 * t_t$$

Príloha K - sezónne indexy, vyrovnané hodnoty a časové premenné dokončených dvojizbových bytov

Obdobie	Dokončené byty dvojizbové y _t	Kľúčové súčty	Kľúčové priemery	Centrované kľúčové priemery	Sezónne indexy (S _t)	Priemerné S _t	Korigované priemerné S _t	Vyrovnané hodnoty Y _{t-vyr}	1.				2.				3.			
									t _t	Y _{t-vyr} * t _t	t _t ²	t _t	Y _{t-vyr} * t _t	t _t ²	t _t	Y _{t-vyr} * t _t	t _t ²			
2008	1.Q.	720				1.2370	1.1459	825.0716	-51	-42,078.65	2,601	-25.5	-21,039.33	650	1	825.07	1			
	2.Q.	922				0.7268	0.6733	620.8186	-49	-30,420.11	2,401	-24.5	-15,210.06	600	2	1,241.64	4			
	3.Q.	1109	4,056.00	1,014.00	1,006.00	1.10	0.8639	958.0189	-47	-45,026.89	2,209	-23.5	-22,513.44	552	3	2,874.06	9			
	4.Q.	1305	3,992.00	998.00	974.38	1.34	1.4215	1,718.5152	-45	-77,333.18	2,025	-22.5	-38,666.59	506	4	6,874.06	16			
2009	1.Q.	656	3,803.00	950.75	958.88	0.68		751.7319	-43	-32,324.47	1,849	-21.5	-16,162.24	462	5	3,758.66	25			
	2.Q.	733	3,868.00	967.00	1,005.63	0.73		493.5575	-41	-20,235.86	1,681	-20.5	-10,117.93	420	6	2,961.35	36			
	3.Q.	1174	4,177.00	1,044.25	1,035.88	1.13		1,014.1697	-39	-39,552.62	1,521	-19.5	-19,776.31	380	7	7,099.19	49			
	4.Q.	1614	4,110.00	1,027.50	1,035.25	1.56		2,125.4280	-37	-78,640.83	1,369	-18.5	-39,320.42	342	8	17,003.42	64			
2010	1.Q.	589	4,172.00	1,043.00	1,047.25	0.56		674.9544	-35	-23,623.40	1,225	-17.5	-11,811.70	306	9	6,074.59	81			
	2.Q.	795	4,206.00	1,051.50	1,005.00	0.79		535.3045	-33	-17,665.05	1,089	-16.5	-8,832.52	272	10	5,353.05	100			
	3.Q.	1208	3,834.00	958.50	980.75	1.23		1,043.5409	-31	-32,349.77	961	-15.5	-16,174.88	240	11	11,478.95	121			
	4.Q.	1242	4,012.00	1,003.00	946.38	1.31		1,635.5524	-29	-47,431.02	841	-14.5	-23,715.51	210	12	19,626.63	144			
2011	1.Q.	767	3,559.00	889.75	821.25	0.93		878.9304	-27	-23,731.12	729	-13.5	-11,865.56	182	13	11,426.10	169			
	2.Q.	342	3,011.00	752.75	728.25	0.47		230.2819	-25	-5,757.05	625	-12.5	-2,878.52	156	14	3,223.95	196			
	3.Q.	660	2,815.00	703.75	677.13	0.97		570.1465	-23	-13,113.37	529	-11.5	-6,556.68	132	15	8,552.20	225			
	4.Q.	1046	2,602.00	650.50	673.25	1.55		1,377.4459	-21	-28,926.36	441	-10.5	-14,463.18	110	16	22,039.13	256			
2012	1.Q.	554	2,784.00	696.00	680.00	0.81		634.8468	-19	-12,062.09	361	-9.5	-6,031.04	90	17	10,792.39	289			
	2.Q.	524	2,656.00	664.00	668.25	0.78		352.8296	-17	-5,998.10	289	-8.5	-2,999.05	72	18	6,350.93	324			
	3.Q.	532	2,690.00	672.50	682.13	0.78		459.5726	-15	-6,893.59	225	-7.5	-3,446.79	56	19	8,731.88	361			
	4.Q.	1080	2,767.00	691.75	690.63	1.56		1,422.2194	-13	-18,488.85	169	-6.5	-9,244.43	42	20	28,444.39	400			
2013	1.Q.	631	2,758.00	689.50	687.63	0.92		723.0836	-11	-7,953.92	121	-5.5	-3,976.96	30	21	15,184.76	441			
	2.Q.	515	2,743.00	685.75	652.75	0.79		346.7696	-9	-3,120.93	81	-4.5	-1,560.46	20	22	7,628.93	484			
	3.Q.	517	2,479.00	619.75	608.00	0.85		446.6148	-7	-3,126.30	49	-3.5	-1,563.15	12	23	10,272.14	529			
	4.Q.	816	2,385.00	596.25	610.00	1.34		1,074.5658	-5	-5,372.83	25	-2.5	-2,686.41	6	24	25,789.58	576			
2014	1.Q.	537	2,495.00	623.75	616.25	0.87		615.3659	-3	-1,846.10	9	-1.5	-923.05	2	25	15,384.15	625			
	2.Q.	625	2,435.00	608.75	625.75	1.00		420.8369	-1	-420.84	1	-0.5	-210.42	0	26	10,941.76	676			
	3.Q.	457	2,571.00	642.75	675.88	0.68		394.7833	1	394.78	1	0.5	197.39	0	27	10,659.15	729			
	4.Q.	952	2,836.00	709.00	680.88	1.40		1,253.6601	3	3,760.98	9	1.5	1,880.49	2	28	35,102.48	784			
2015	1.Q.	802	2,611.00	652.75	668.75	1.20		919.0381	5	4,595.19	25	2.5	2,297.60	6	29	26,652.10	841			
	2.Q.	400	2,739.00	684.75	678.50	0.59		269.3356	7	1,885.35	49	3.5	942.67	12	30	8,080.07	900			
	3.Q.	585	2,689.00	672.25	630.63	0.93		505.3571	9	4,548.21	81	4.5	2,274.11	20	31	15,666.07	961			
	4.Q.	902	2,356.00	589.00	581.63	1.55		1,187.8166	11	13,065.98	121	5.5	6,532.99	30	32	38,010.13	1,024			
2016	1.Q.	469	2,297.00	574.25	569.50	0.82		537.4425	13	6,986.75	169	6.5	3,493.38	42	33	17,735.60	1,089			
	2.Q.	341	2,259.00	564.75	569.75	0.60		229.6086	15	3,444.13	225	7.5	1,722.06	56	34	7,806.69	1,156			
	3.Q.	547	2,299.00	574.75	604.75	0.90		472.5305	17	8,033.02	289	8.5	4,016.51	72	35	16,538.57	1,225			
	4.Q.	942	2,539.00	634.75	649.88	1.45		1,240.4914	19	23,569.34	361	9.5	11,784.67	90	36	44,657.69	1,296			
2017	1.Q.	709	2,660.00	665.00	674.63	1.05		812.4663	21	17,061.79	441	10.5	8,530.90	110	37	30,061.25	1,369			
	2.Q.	462	2,737.00	684.25	674.63	0.68		311.0826	23	7,154.90	529	11.5	3,577.45	132	38	11,821.14	1,444			
	3.Q.	624	2,660.00	665.00	686.38	0.91		539.0476	25	13,476.19	625	12.5	6,738.10	156	39	21,022.86	1,521			
	4.Q.	865	2,831.00	707.75	722.88	1.20		1,139.0924	27	30,755.50	729	13.5	15,377.75	182	40	45,563.70	1,600			
2018	1.Q.	880	2,952.00	738.00	740.63	1.19		1,008.4208	29	29,244.20	841	14.5	14,622.10	210	41	41,345.25	1,681			
	2.Q.	583	2,973.00	743.25	767.13	0.76		392.5566	31	12,169.26	961	15.5	6,084.63	240	42	16,487.38	1,764			
	3.Q.	645	3,164.00	791.00	775.50	0.83		557.1886	33	18,387.23	1,089	16.5	9,193.61	272	43	23,959.11	1,849			
	4.Q.	1056	3,040.00	760.00	773.75	1.36		1,390.6146	35	48,671.51	1,225	17.5	24,335.76	306	44	61,187.04	1,936			
2019	1.Q.	756	3,150.00	787.50	802.88	0.94		866.3252	37	32,054.03	1,369	18.5	16,027.02	342	45	38,984.63	2,025			
	2.Q.	693	3,273.00	818.25	846.50	0.82		466.6239	39	18,198.33	1,521	19.5	9,099.17	380	46	21,464.70	2,116			
	3.Q.	768	3,499.00	874.75	884.38	0.87		663.4432	41	27,201.17	1,681	20.5	13,600.59	420	47	31,181.83	2,209			
	4.Q.	1282	3,576.00	894.00	895.13	1.43		1,688.2272	43	72,593.77	1,849	21.5	36,296.88	462	48	81,034.90	2,304			
2020	1.Q.	833	3,585.00	896.25	945.13	0.88		954.5620	45	42,955.29	2,025	22.5	21,477.64	506	49	46,773.54	2,401			
	2.Q.	702	3,976.00	994.00	990.00	0.71		472.6840	47	22,216.15	2,209	23.5	11,108.07	552	50	23,634.20	2,500			
	3.Q.	1159	3,944.00	986.00			1,001.2118	49	49,059.38	2,401	24.5	24,529.69	600	51	51,061.80	2,601				
	4.Q.	1250					1,646.0873	51	83,950.45	2,601	25.5	41,975.23	650	52	85,596.54	2,704				
Spolu		40,877	x	x	x	x	4.3178	4.0000	42,869.87	0	-28,060.42	46,852	0	-14,030.21	11,713	1,378	1,122,021.38	48,230		

$$KK = \frac{4}{4.31782379791923} = 0.926392596642690$$



1.

$$b_0 = \frac{\sum Y_{t-vyr}}{T} = \frac{42,869.87}{52} = 824.4206$$

$$b_1 = \frac{\sum Y_{t-vyr} * t_t}{\sum t_t^2} = \frac{-28,060.42}{46,852} = -0.5989$$

$$y_t' = b_0 + b_1 * t_t$$

$$y_t' = 824.4206 - 0.5989 * t_t$$

2.

$$b_0 = \frac{\sum Y_{t-vyr}}{T} = \frac{42,869.87}{52} = 824.4206$$

$$b_1 = \frac{\sum Y_{t-vyr} * t_t}{\sum t_t^2} = \frac{-14,030.21}{11,713} = -1.1978$$

$$y_t' = b_0 + b_1 * t_t$$

$$y_t' = 824.4206 - 1.1978 * t_t$$

3.

$$\begin{aligned} \sum Y_{t-vyr} &= T * b_0 + b_1 * \sum t_t \\ 42,869.87 &= 52 * b_0 + b_1 * 1,378 \\ 1,122,021.38 &= b_0 * \sum t_t + b_1 * \sum t_t^2 \\ &= b_0 * 1,378 + b_1 * 48,230 \end{aligned}$$

$$b_0 = \frac{42,869.87 - 1,378 * b_1}{52}$$

$$b_1 = \frac{21,577.33 - 26.5 * b_1}{927.5 - 702.25}$$

$$b_1 = -1.1978$$

$$b_0 = 856.1632$$

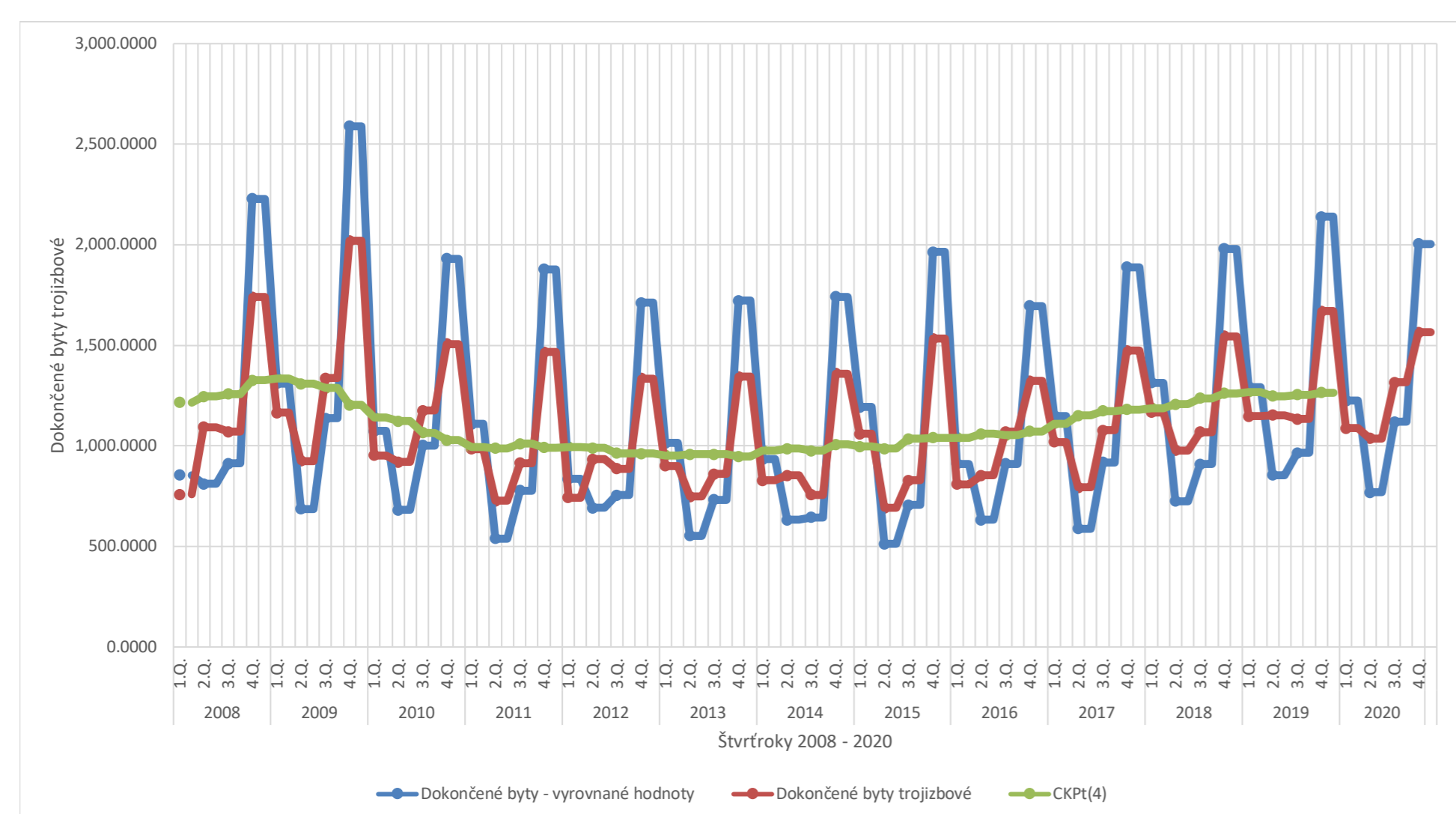
$$y_t' = b_0 + b_1 * t_t$$

$$y_t' = 856.1632 - 1.1978 * t_t$$

Príloha L - sezónne indexy, vyrovnané hodnoty a časové premenné dokončených trojizbových bytov

Obdobie	Dokončené byty trojizbové y _t	Kľúčové súčty	Kľúčové priemery	Centrovane kľúčové priemery	Sezónne indexy (S _t)	Priemerné S _t	Korigované priemerné S _t	Vyrovnané hodnoty Y _{t-vyr}	1.			2.			3.			
									t _t	Y _{t-vyr} * t _t	t _t ²	t _t	Y _{t-vyr} * t _t	t _t ²	t _t	Y _{t-vyr} * t _t	t _t ²	
2008	1.Q.	759				1.2152	1.1260	854.6389	-51	-43,586.58	2,601	-25.5	-21,793.29	650	1	854.64	1	
	2.Q.	1093				0.7999	0.7412	810.1697	-49	-39,698.32	2,401	-24.5	-19,849.16	600	2	1,620.34	4	
	3.Q.	1071	4,662.00	1,165.50	1,216.13	0.88	0.9185	0.8512	911.5818	-47	-42,844.34	2,209	-23.5	-21,422.17	552	3	2,734.75	9
	4.Q.	1739	5,067.00	1,266.75	1,245.75	1.40	1.3831	1.2816	2,228.7174	-45	-100,292.28	2,025	-22.5	-50,146.14	506	4	8,914.87	16
2009	1.Q.	1164	4,899.00	1,224.75	1,257.88	0.93		1,310.6715	-43	-56,358.87	1,849	-21.5	-28,179.44	462	5	6,553.36	25	
	2.Q.	925	5,164.00	1,291.00	1,326.13	0.70		685.6423	-41	-28,111.33	1,681	-20.5	-14,055.67	420	6	4,113.85	36	
	3.Q.	1336	5,445.00	1,361.25	1,334.88	1.00		1,137.1365	-39	-44,348.32	1,521	-19.5	-22,174.16	380	7	7,959.96	49	
	4.Q.	2020	5,234.00	1,308.50	1,307.88	1.54		2,588.8494	-37	-95,787.43	1,369	-18.5	-47,893.71	342	8	20,710.80	64	
2010	1.Q.	953	5,229.00	1,307.25	1,287.25	0.74		1,073.0841	-35	-37,557.94	1,225	-17.5	-18,778.97	306	9	9,657.76	81	
	2.Q.	920	5,069.00	1,267.25	1,203.00	0.76		681.9361	-33	-22,503.89	1,089	-16.5	-11,251.95	272	10	6,819.36	100	
	3.Q.	1176	4,555.00	1,138.75	1,142.75	1.03		1,000.9525	-31	-31,029.53	961	-15.5	-15,514.76	240	11	11,010.48	121	
	4.Q.	1506	4,587.00	1,146.75	1,122.63	1.34		1,930.1026	-29	-55,972.97	841	-14.5	-27,986.49	210	12	23,161.23	144	
2011	1.Q.	985	4,394.00	1,098.50	1,065.75	0.92		1,109.1163	-27	-29,946.14	729	-13.5	-14,973.07	182	13	14,418.51	169	
	2.Q.	727	4,132.00	1,033.00	1,028.00	0.71		538.8778	-25	-13,471.94	625	-12.5	-6,735.97	156	14	7,544.29	196	
	3.Q.	914	4,092.00	1,023.00	992.63	0.92		777.9512	-23	-17,892.88	529	-11.5	-8,946.44	132	15	11,669.27	225	
	4.Q.	1466	3,849.00	962.25	988.13	1.48		1,878.8382	-21	-39,455.60	441	-10.5	-19,727.80	110	16	30,061.41	256	
2012	1.Q.	742	4,056.00	1,014.00	1,010.50	0.73		835.4968	-19	-15,874.44	361	-9.5	-7,937.22	90	17	14,203.44	289	
	2.Q.	934	4,028.00	1,007.00	990.63	0.94		692.3134	-17	-11,769.33	289	-8.5	-5,884.66	72	18	12,461.64	324	
	3.Q.	886	3,897.00	974.25	994.00	0.89		754.1190	-15	-11,311.78	225	-7.5	-5,655.89	56	19	14,328.26	361	
	4.Q.	1335	4,055.00	1,013.75	990.38	1.35		1,710.9475	-13	-22,242.32	169	-6.5	-11,121.16	42	20	34,218.95	400	
2013	1.Q.	900	3,868.00	967.00	963.63	0.93		1,013.4058	-11	-11,147.46	121	-5.5	-5,573.73	30	21	21,281.52	441	
	2.Q.	747	3,841.00	960.25	961.25	0.78		553.7025	-9	-4,983.32	81	-4.5	-2,491.66	20	22	12,181.45	484	
	3.Q.	859	3,849.00	962.25	953.38	0.90		731.1379	-7	-5,117.97	49	-3.5	-2,558.98	12	23	16,816.17	529	
	4.Q.	1343	3,778.00	944.50	957.63	1.40		1,721.2004	-5	-8,606.00	25	-2.5	-4,303.00	6	24	41,308.81	576	
2014	1.Q.	829	3,883.00	970.75	957.88	0.87		933.4593	-3	-2,800.38	9	-1.5	-1,400.19	2	25	23,336.48	625	
	2.Q.	852	3,780.00	945.00	947.00	0.90		631.5321	-1	-631.53	1	-0.5	-315.77	0	26	16,419.84	676	
	3.Q.	756	3,796.00	949.00	977.88	0.77		643.4695	1	643.47	1	0.5	321.73	0	27	17,373.68	729	
	4.Q.	1359	4,027.00	1,006.75	986.75	1.38		1,741.7061	3	5,225.12	9	1.5	2,612.56	2	28	48,767.77	784	
2015	1.Q.	1060	3,867.00	966.75	975.88	1.09		1,193.5668	5	5,967.83	25	2.5	2,983.92	6	29	34,613.44	841	
	2.Q.	692	3,940.00	985.00	1,006.63	0.69		512.9345	7	3,590.54	49	3.5	1,795.27	12	30	15,388.04	900	
	3.Q.	829	4,113.00	1,028.25	996.88	0.83		705.6034	9	6,350.43	81	4.5	3,175.22	20	31	21,873.71	961	
	4.Q.	1532	3,862.00	965.50	985.63	1.55		1,963.4244	11	21,597.67	121	5.5	10,798.83	30	32	62,829.58	1,024	
2016	1.Q.	809	4,023.00	1,005.75	1,035.88	0.78		910.9392	13	11,842.21	169	6.5	5,921.10	42	33	30,060.99	1,089	
	2.Q.	853	4,264.00	1,066.00	1,039.88	0.82		632.2734	15	9,484.10	225	7.5	4,742.05	56	34	21,497.29	1,156	
	3.Q.	1070	4,055.00	1,013.75	1,040.13	1.03		910.7306	17	15,482.42	289	8.5	7,741.21	72	35	31,875.57	1,225	
	4.Q.	1323	4,266.00	1,066.50	1,059.00	1.25		1,695.5682	19	32,215.80	361	9.5	16,107.90	90	36	61,040.45	1,296	
2017	1.Q.	1020	4,206.00	1,051.50	1,052.50	0.97		1,148.5265	21	24,119.06	441	10.5	12,059.53	110	37	42,495.48	1,369	
	2.Q.	793	4,214.00	1,053.50	1,072.38	0.74		587.7993	23	13,519.38	529	11.5	6,759.69	132	38	22,336.37	1,444	
	3.Q.	1078	4,365.00	1,091.25	1,109.63	0.97		917.5398	25	22,938.50	625	12.5	11,469.25	156	39	35,784.05	1,521	
	4.Q.	1474	4,512.00	1,128.00	1,151.00	1.28		1,889.0911	27	51,005.46	729	13.5	25,502.73	182	40	75,563.64	1,600	
2018	1.Q.	1167	4,696.00	1,174.00	1,172.75	1.00		1,314.0495	29	38,107.44	841	14.5	19,053.72	210	41	53,876.03	1,681	
	2.Q.	977	4,686.00	1,171.50	1,180.38	0.83		724.1865	31	22,449.78	961	15.5	11,224.89	240	42	30,415.83	1,764	
	3.Q.	1068	4,757.00	1,189.25	1,186.88	0.90		909.0283	33	29,997.93	1,089	16.5	14,998.97	272	43	39,088.22	1,849	
	4.Q.	1545	4,738.00	1,184.50	1,206.50	1.28		1,980.0853	35	69,302.99	1,225	17.5	34,651.49	306	44	87,123.75	1,936	
2019	1.Q.	1148	4,914.00	1,228.50	1,236.75	0.93		1,292.6554	37	47,828.25	1,369	18.5	23,914.12	342	45	58,169.49	2,025	
	2.Q.	1153	4,980.00	1,245.00	1,260.50	0.91		854.6438	39	33,331.11	1,521	19.5	16,665.55	380	46	39,313.62	2,116	
	3.Q.	1134	5,104.00	1,276.00	1,268.50	0.89		965.2042	41	39,573.37	1,681	20.5	19,786.69	420	47	45,364.60	2,209	
	4.Q.	1669	5,044.00	1,261.00	1,246.50	1.34		2,139.0048	43	91,977.21	1,849	21.5	45,988.60	462	48	102,672.23	2,304	
2020	1.Q.	1088	4,928.00	1,232.00	1,254.63	0.87		1,225.0950	45	55,129.27	2,025	22.5	27,564.64	506	49	60,029.65	2,401	
	2.Q.	1037	5,109.00	1,277.25	1,264.13	0.82		768.6606	47	36,127.05	2,209	23.5	18,063.52	552	50	38,433.03	2,500	
	3.Q.	1315	5,004.00	1,251.00			1,119.2624	49	54,843.86	2,401	24.5	27,421.93	600	51	57,082.38	2,601		
	4.Q.	1564					2,004.4359	51	102,226.23	2,601	25.5	51,113.11	650	52	104,230.66	2,704		
Spolu		57,694	x	x	x	x	4.3167	4.0000	59,845.06	0	51,533.55	46,852	0	25,766.77	11,713	1,378	1,611,661.00	48,230

KK= $\frac{4}{4.31670460941071} = 0.926632781701052$



1. $b_0 = \frac{\sum y_{t-vyr}}{T} = \frac{59,845.06}{52} = 1,150.8666$

$b_1 = \frac{\sum y_{t-vyr} * t_t}{\sum t_t^2} = \frac{51,533.55}{46,852} = 1.0999$

$y_t' = b_0 + b_1 * t_t$

$y_t' = 1,150.8666 + 1.0999 * t_t$

2.

$b_0 = \frac{\sum y_{t-vyr}}{T} = \frac{59,845.06}{52} = 1,150.8666$

$b_1 = \frac{\sum y_{t-vyr} * t_t}{\sum t_t^2} = \frac{25,766.77}{11,713} = 2.1998$

$y_t' = b_0 + b_1 * t_t$

$y_t' = 1,150.8666 + 2.1998 * t_t$

3.

$\sum y_{t-vyr}$	=	T	*	b_0	+	b_1	*	$\sum t_t$
$\sum y_{t-vyr} * t_t$	=	b_0	*	$\sum t_t$	+	b_1	*	$\sum t_t^2$
59,845.06	=	52	*	b_0	+	b_1	*	1,378
1,611,661.00	=	b_0	*	1,378	+	b_1	*	48,230

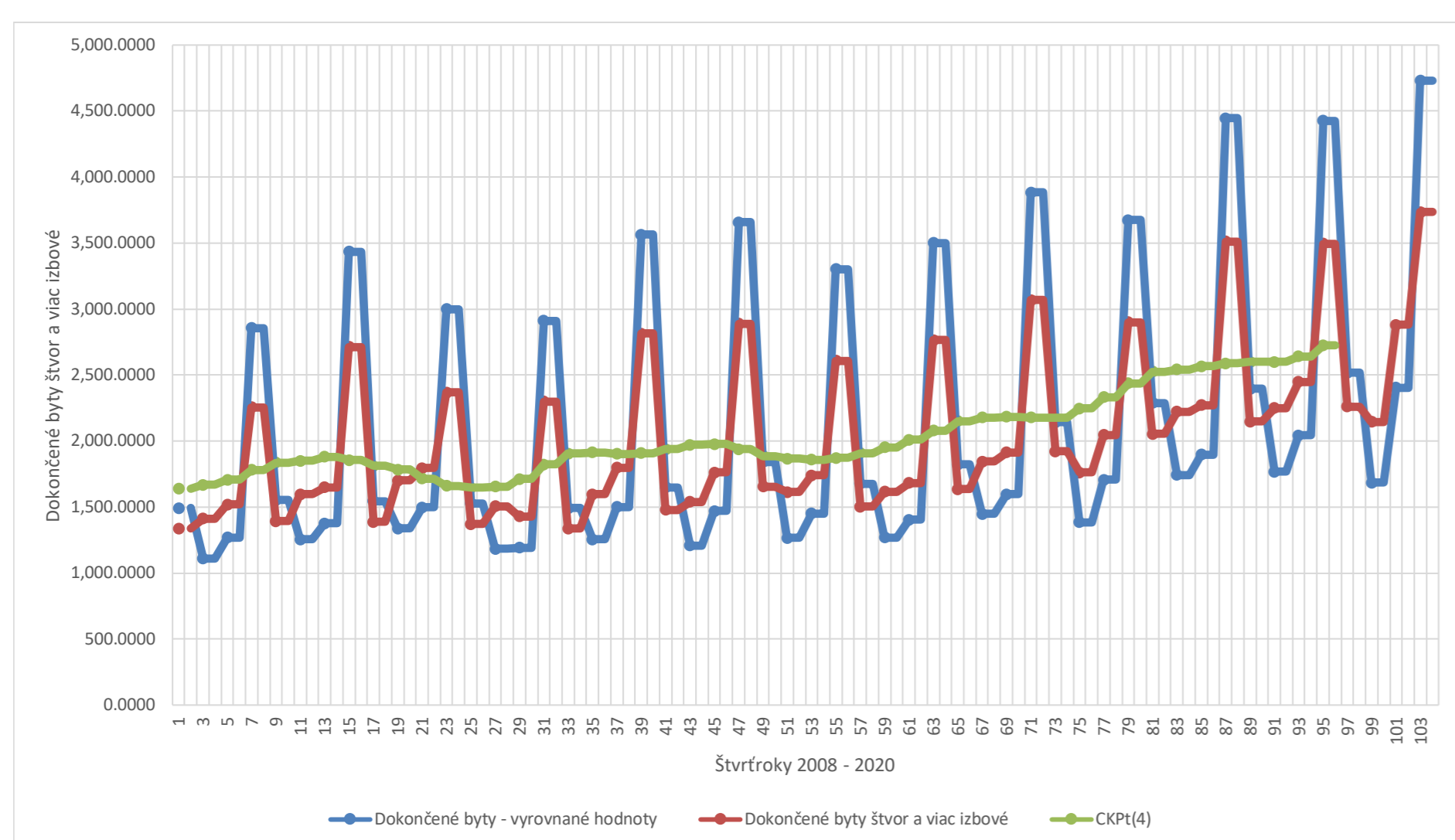
$b_0 = \frac{59,845.06 - 1,378 * b_1}{52}$

</

Príloha M - sezónne indexy, vyrovnané hodnoty a časové premenné dokončených štvor a viac izbových bytov

Obdobie	Dokončené byty štvor a viacizbové y _t	Kľúčové súčty	Kľúčové priemery	Centrované kľúčové priemery	Sezónne indexy (S _t)	Priemerné S _t	Korigované priemerné S _t	Vyrovnané hodnoty Y _{t-vyr}	1.			2			3.			
									t _t	Y _{t-vyr} * t _t	t _t ²	t _t	Y _{t-vyr} * t _t	t _t ²	t _t	Y _{t-vyr} * t _t	t _t ²	
2008	1.Q.	1338.00				1.2256	1.1143	1,490.9740	-51	-76,039.67	2,601	-25.5	-38,019.84	650	1	1,490.97	1	
	2.Q.	1413.00				0.8637	0.7852	1,109.5469	-49	-54,367.80	2,401	-24.5	-27,183.90	600	2	2,219.09	4	
	3.Q.	1521.00	6,527.00	1,631.75	1,638.63	0.93	0.9177	1,269.1004	-47	-59,647.72	2,209	-23.5	-29,823.86	552	3	3,807.30	9	
	4.Q.	2255.00	6,582.00	1,645.50	1,668.50	1.35	1.3925	2,854.9251	-45	-128,471.63	2,025	-22.5	-64,235.81	506	4	11,419.70	16	
2009	1.Q.	1393.00	6,766.00	1,691.50	1,707.50	0.82		1,552.2622	-43	-66,747.27	1,849	-21.5	-33,373.64	462	5	7,761.31	25	
	2.Q.	1597.00	6,894.00	1,723.50	1,780.75	0.90		1,254.0314	-41	-51,415.29	1,681	-20.5	-25,707.64	420	6	7,524.19	36	
	3.Q.	1649.00	7,352.00	1,838.00	1,837.25	0.90		1,375.9017	-39	-53,660.17	1,521	-19.5	-26,830.08	380	7	9,631.31	49	
	4.Q.	2713.00	7,452.00	1,863.00	1,849.75	1.47		3,434.7724	-37	-127,086.58	1,369	-18.5	-63,543.29	342	8	27,478.18	64	
2010	1.Q.	1387.00	7,597.00	1,899.25	1,881.13	0.74		1,545.5762	-35	-54,095.17	1,225	-17.5	-27,047.58	306	9	13,910.19	81	
	2.Q.	1703.00	7,253.00	1,813.25	1,856.25	0.92		1,337.2671	-33	-44,129.81	1,089	-16.5	-22,064.91	272	10	13,372.67	100	
	3.Q.	1794.00	7,237.00	1,809.25	1,811.25	0.99		1,496.8877	-31	-46,403.52	961	-15.5	-23,201.76	240	11	16,465.76	121	
	4.Q.	2369.00	7,040.00	1,760.00	1,784.63	1.33		2,999.2539	-29	-86,978.36	841	-14.5	-43,489.18	210	12	35,991.05	144	
2011	1.Q.	1371.00	6,674.00	1,668.50	1,714.25	0.80		1,527.7469	-27	-41,249.17	729	-13.5	-20,624.58	182	13	19,860.71	169	
	2.Q.	1506.00	6,604.00	1,651.00	1,659.75	0.91		1,182.5744	-25	-29,564.36	625	-12.5	-14,782.18	156	14	16,556.04	196	
	3.Q.	1428.00	6,571.00	1,642.75	1,646.88	0.87		1,191.5025	-23	-27,404.56	529	-11.5	-13,702.28	132	15	17,872.54	225	
	4.Q.	2299.00	6,662.00	1,665.50	1,654.13	1.39		2,910.6309	-21	-61,123.25	441	-10.5	-30,561.62	110	16	46,570.09	256	
2012	1.Q.	1338.00	7,033.00	1,758.25	1,711.88	0.78		1,490.9740	-19	-28,328.51	361	-9.5	-14,164.25	90	17	25,346.56	289	
	2.Q.	1597.00	7,548.00	1,887.00	1,822.63	0.88		1,254.0314	-17	-21,318.53	289	-8.5	-10,659.27	72	18	22,572.57	324	
	3.Q.	1799.00	7,689.00	1,922.25	1,904.63	0.94		1,501.0596	-15	-22,515.89	225	-7.5	-11,257.95	56	19	28,520.13	361	
	4.Q.	2814.00	7,631.00	1,907.75	1,915.00	1.47		3,562.6426	-13	-46,314.35	169	-6.5	-23,157.18	42	20	71,252.85	400	
2013	1.Q.	1479.00	7,594.00	1,898.50	1,903.13	0.78		1,648.0946	-11	-18,129.04	121	-5.5	-9,064.52	30	21	34,609.99	441	
	2.Q.	1539.00	7,670.00	1,917.50	1,908.00	0.81		1,208.4874	-9	-10,876.39	81	-4.5	-5,438.19	20	22	26,586.72	484	
	3.Q.	1762.00	7,845.00	1,961.25	1,939.38	0.91		1,470.1873	-7	-10,291.31	49	-3.5	-5,145.66	12	23	33,814.31	529	
	4.Q.	2890.00	7,920.00	1,980.00	1,970.63	1.47		3,658.8618	-5	-18,294.31	25	-2.5	-9,147.15	6	24	87,812.68	576	
2014	1.Q.	1654.00	7,897.00	1,974.25	1,977.13	0.84		1,843.1024	-3	-5,529.31	9	-1.5	-2,764.65	2	25	46,077.56	625	
	2.Q.	1614.00	7,616.00	1,904.00	1,939.13	0.83		1,267.3806	-1	-1,267.38	1	-0.5	-633.69	0	26	32,951.89	676	
	3.Q.	1739.00	7,466.00	1,866.50	1,885.25	0.92		1,450.9964	1	1,451.00	1	0.5	725.50	0	27	39,176.90	729	
	4.Q.	2609.00	7,468.00	1,867.00	1,866.75	1.40		3,303.1040	3	9,909.31	9	1.5	4,954.66	2	28	92,486.91	784	
2015	1.Q.	1504.00	7,411.00	1,852.75	1,859.88	0.81		1,675.9528	5	8,379.76	25	2.5	4,189.88	6	29	48,602.63	841	
	2.Q.	1616.00	7,568.00	1,892.00	1,872.38	0.86		1,268.9510	7	8,882.66	49	3.5	4,441.33	12	30	38,068.53	900	
	3.Q.	1682.00	7,699.00	1,924.75	1,908.38	0.88		1,403.4365	9	12,630.93	81	4.5	6,315.46	20	31	43,506.53	961	
	4.Q.	2766.00	7,928.00	1,982.00	1,953.38	1.42		3,501.8726	11	38,520.60	121	5.5	19,260.30	30	32	112,059.92	1,024	
2016	1.Q.	1635.00	8,161.00	2,040.25	2,011.13	0.81		1,821.9301	13	23,685.09	169	6.5	11,842.55	42	33	60,123.69	1,089	
	2.Q.	1845.00	8,463.00	2,115.75	2,078.00	0.89		1,448.7715	15	21,731.57	225	7.5	10,865.79	56	34	49,258.23	1,156	
	3.Q.	1915.00	8,750.00	2,187.50	2,151.63	0.89		1,597.8483	17	27,163.42	289	8.5	13,581.71	72	35	55,924.69	1,225	
	4.Q.	3068	8,668.00	2,167.00	2,177.25	1.41		3,884.2173	19	73,800.13	361	9.5	36,900.06	90	36	139,831.82	1,296	
2017	1.Q.	1922	8,799.00	2,199.75	2,183.38	0.88		2,141.7429	21	44,976.60	441	10.5	22,488.30	110	37	79,244.49	1,369	
	2.Q.	1763	8,632.00	2,158.00	2,178.88	0.81		1,384.3816	23	31,840.78	529	11.5	15,920.39	132	38	52,606.50	1,444	
	3.Q.	2046	8,764.00	2,191.00	2,174.50	0.94		1,707.1528	25	42,678.82	625	12.5	21,339.41	156	39	66,578.96	1,521	
	4.Q.	2901	9,222.00	2,305.50	2,248.25	1.29		3,672.7883	27	99,165.28	729	13.5	49,582.64	182	40	146,911.53	1,600	
2018	1.Q.	2054	9,449.00	2,362.25	2,333.88	0.88		2,288.8345	29	66,376.20	841	14.5	33,188.10	210	41	93,842.21	1,681	
	2.Q.	2221	10,059.00	2,514.75	2,438.50	0.91		1,744.0224	31	54,064.70	961	15.5	27,032.35	240	42	73,248.94	1,764	
	3.Q.	2273	10,154.00	2,538.50	2,526.63	0.90		1,896.5583	33	62,586.42	1,089	16.5	31,293.21	272	43	81,552.01	1,849	
	4.Q.	3511	10,183.00	2,545.75	2,542.13	1.38		4,445.0740	35	155,577.59	1,225	17.5	77,788.79	306	44	195,583.26	1,936	
2019	1.Q.	2149	10,359.00	2,589.75	2,567.75	0.84		2,394.6959	37	88,603.75	1,369	18.5	44,301.87	342	45	107,761.31	2,025	
	2.Q.	2250	10,344.00	2,586.00	2,587.88	0.87		1,766.7945	39	68,904.98	1,521	19.5	34,452.49	380	46	81,272.54	2,116	
	3.Q.	2449	10,455.00	2,613.75	2,599.88	0.94		2,043.4102	41	83,779.82	1,681	20.5	41,889.91	420	47	96,040.28	2,209	
	4.Q.	3496	10,350.00	2,587.50	2,600.63	1.34		4,426.0834	43	190,321.58	1,849	21.5	95,160.79	462	48	212,452.00	2,304	
2020	1.Q.	2260	10,782.00	2,695.50	2,641.50	0.86		2,518.3866	45	113,327.39	2,025	22.5	56,663.70	506	49	123,400.94	2,401	
	2.Q.	2145	11,022.00	2,755.50	2,725.50	0.79		1,684.3440	47	79,164.17	2,209	23.5	39,582.09	552	50	84,217.20	2,500	
	3.Q.	2881					2,403.8647	49	117,789.37	2,401	24.5	58,894.69	600	51	122,597.10	2,601		
	4.Q.	3736					4,729.9335	51	241,226.61	2,601	25.5	120,613.30	650	52	245,956.54	2,704		
Spolu		106,658	x	x	x	x	4.3995	4.0000	110,042.92	0	575,289.20	46,852	0	287,644.60	11,713	1,378	3,203,782.07	48,230

$$KK = \frac{4}{4.39953730976068} = 0.909186516301548$$



1.

$$b_0 = \frac{\sum Y_{t-vyr}}{T} = \frac{110,042.92}{52} = 2,116.2101$$

$$b_1 = \frac{\sum Y_{t-vyr} * t_t}{\sum t_t^2} = \frac{575,289.20}{46,852} = 12.2789$$

$$y_t' = b_0 + b_1 * t_t$$

$$y_t' = 2,116.2101 + 12.2789 * t_t$$

2.

$$b_0 = \frac{\sum Y_{t-vyr}}{T} = \frac{110,042.92}{52} = 2,116.2101$$

$$b_1 = \frac{\sum Y_{t-vyr} * t_t}{\sum t_t^2} = \frac{287,644.60}{11,713} = 24.5577$$

$$y_t' = b_0 + b_1 * t_t$$

$$y_t' = 2,116.2101 + 24.5577 * t_t$$

3.

$$\begin{aligned} \sum Y_{t-vyr} &= T * b_0 + b_1 * \sum t_t \\ 110,042.92 &= 52 * b_0 + b_1 * 1,378 \\ 3,203,782.07 &= b_0 * \sum t_t + b_1 * \sum t_t^2 \end{aligned}$$

$$b_0 = \frac{110,042.92 - 1,378$$